



Aspetuck

Land Trust

2019 Annual Report

Dear Aspetuck Land Trust Member,

2019 was a great year for Aspetuck Land Trust and 2020, despite the challenges, looks to be another great one as well. Let's summarize:

Gilbertie's Farm: We entered into a contract to preserve this special piece of property. We fundraised and planned extensively for it and closed the transaction in April 2020. This is an enormous accomplishment that was led by Board Member Ross Ogden and our Executive Director David Brant and supported by several other members. We are extremely pleased to be able to preserve this important piece of property which abuts our Randall's Farm Preserve.

Green Corridor: This is our continuing effort to preserve more properties in the 40,000-acre corridor and to better connect them and those we already preserve by encouraging homeowners within the corridor to manage their properties more sustainably. Our intent is to help safeguard our community's land, wildlife, and water resources for future generations by linking all these parcels together, as best we can, to build the Green Corridor. To that end, we sponsored many events and demonstration projects including the very interesting and successful Haskins Lecture by Professor Doug Tallamy on "Restoring the Little Things that Run the World" last November 7th. The turnout was large and the reception was very warm. We were pleased to have this opportunity to connect Doug with our members and friends.

Financial Support: Our fundraising effort in 2019 was exceptional. We had donations of \$1,098,396 which exceeded our 2018 total by 75%. This reflected the incredible generosity of you, our members, a lot of institutional support, and the receipt of grants from the State of Connecticut which our staff worked very hard to get. This support helped us in our land acquisition efforts and to create opportunities to expand our Green Corridor programs. Very exciting!

Our Preserves: We continued to provide access to our preserves through the efforts of our Land Management Committee and the trail stewards whom we can't thank enough. We also provided habitat for wildlife and fauna for all our benefit, which is our reason for being in existence. Very rewarding!

As we enter 2020, I want to acknowledge the service of two of our Board Members who will be completing their service this year, Lissy Newman and Aili diBonaventura. Their caring, warmth and generosity has served us well as an organization. We deeply appreciate them and their work. We look forward to their friendship and their continued support and counsel as members.

I also want to acknowledge the long service and support of Bruce LePage, who died in May 2020, and our condolences to his family. Bruce served Aspetuck Land Trust for over 30 years as a member, Board member and Executive Director. His leadership, particularly in helping to organize the effort to acquire Trout Brook Valley was exceptional. Our Board is committed to naming a trail in his honor and memory at Trout Brook Valley



Aspetuck Land Trust President Bill Kraekel.

Derek Sterling photo

and will establish an annual internship fund to keep his legacy alive. Few members have had as large and long-lasting impact as Bruce, and we are forever grateful.

Finally, I want to acknowledge our staff, David Brant, Alice Cooney, Lou Bacchiocchi, Mary Ellen Lemay and Jim Wood, for all of their efforts and support which sustains Aspetuck Land Trust and improves our quality of life.

2020 is turning out to be a challenging year for us due to Covid-19 and the related economic consequences. Interestingly, it is creating greater opportunities for Aspetuck Land Trust to serve you, our members and the community. We welcome the opportunity to do so and look forward to your continued kindness and generous support.

Sincerely,



Bill Kraekel
President, Aspetuck Land Trust



About the Cover

Painting of Gilbertie's Farm in Easton by artist John Forgione.

Board Members

President

Bill Kraekel

Vice President of Finance

Robert W. McHugh

Vice President of Land Acquisition

Ross Ogden

Vice President of Land Management

Joe Schnierlein

Vice President of Membership

Jeff Galdenzi

Vice President of Nominating and Governance

Jacque Littlejohn

Secretary

William Kupinse, Jr.

Executive Director

David Brant

Director of Membership Services

Alice Cooney

Land Stewardship Director

Lou Bacchiocchi

Landowner Engagement Director

Mary Ellen Lemay

Trout Brook Valley Ranger

Jim Wood

EASTON

William Kupinse, Jr.

Ross Ogden

Peter Petron

FAIRFIELD

Jeff Galdenzi

Amy Harlacker

Nancy Moon

WESTON

Dr. J. Thomas Failla

Tom Johnson

Tracy Pennoyer

Michael Tunstall

WESTPORT

Walter Greene, Jr.

Melissa Newman

Heather Williams

AT-LARGE DIRECTORS

Kirby Brendsel

Aili diBonaventura

Bill Kraekel

Jacque Littlejohn

Robert W. McHugh

Joseph Schnierlein

HONORARY DIRECTORS

Robert Larson



Aspetuck Land Trust
P.O. Box 444
Westport, CT 06881

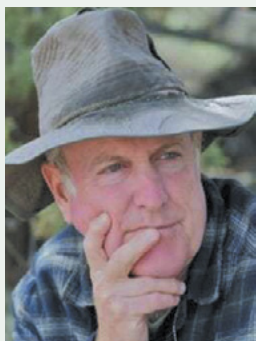
Established 1966

aspetucklandtrust.org

203-331-1906

Aspetuck Land Trust Annual Meeting

June 30, 7:00-8:30 p.m.
Zoom Meeting



Featured Speaker
Doug Tallamy,
Native plant expert

**Learn about how
you can create
more biodiversity
in your yard.**

You are invited to Aspetuck Land Trust's 54th annual meeting of the members. This year we'll discuss the substantial progress made on the Green Corridor Initiative. Specifically, the two pillars of the program that will also fight the climate crisis: What we've done to engage homeowners to create more biodiversity in their yards. Plus, our progress in protecting larger tracts of land within the Green Corridor.

Aspetuck Land Trust members will be asked to approve a slate of directors—Class of 2024—which consists of Tracy Pennoyer (Weston), Ellen Greenberg (Westport), Michelle Fracasso (At-Large Weston), Daken Vanderburg (Easton).

We will be thanking our retiring board members, Lissy Newman and Aili diBonaventura, for their years of dedicated service to the land trust and commitment to land preservation.

How to join a Zoom meeting: We will email you instructions for connecting to the Zoom annual meeting and vote for the slate of directors. Don't we all wish it were in person again with pizza from Skinny Pines and beer from Aspetuck Brew Lab? Next year!

We have Acquired and will Protect Forever Gilbertie's Farm in Easton

On April 30, 2020, we announced the acquisition of Gilbertie's Farm, a picturesque 34-acre working organic farm adjacent to the Aspetuck Land Trust's 34-acre Randall's Farm Preserve on Sport Hill Road in Easton. Gilbertie's Farm is another anchor for our larger vision of creating a multi-town Green Corridor: a 40,000-acre belt of land in Easton, Weston, Redding, Wilton, Westport, and Fairfield.

Gilbertie's Farm is the largest certified organic greenhouse operation in the Northeast and a staple in the Fairfield County food system for many decades. We intend to keep this property as a working farm in perpetuity and are exploring ways the farm can be more accessible to the community.

Closing on April 24, Aspetuck Land Trust acquired the farm for \$2 million from its owner, Dan Levinson of Westport, and his partners. In 2013, Levinson organized a group to purchase and preserve the farm when its bank threatened foreclosure and development.

Levinson has given the land trust a low-cost mortgage on the property and made a generous financial gift that reduced the purchase price significantly. In addition, thanks to donations by land trust members, we contributed significant funds as a down payment to keep the mortgage to \$800,000.



*Certified organic microgreens grown locally at Gilbertie's Farm.
Inset: Farmer Sal Gilbertie.*

“Our intent from the outset was to support Sal Gilbertie and save his farm from development, and we are thrilled now to put it in Aspetuck Land Trust’s hands for the long term,” Levinson said. “We strongly support the land trust’s vision of the farm as a transformational open space centerpiece for their Green Corridor Initiative,” Levinson added.

Sal Gilbertie, who will continue to farm the land and will lease the property from the land trust said: “We want to thank Dan Levinson for his help and Aspetuck Land Trust for purchasing the farm and preserving Gilbertie’s Organics forever and allowing us to continue to grow and serve our communities with quality herbs, vegetables and microgreens.”

Dina Brewster, executive director of the CT Northeast Organic Farming Association said, “I can think of no more valorous investment in the future of our children than the protection of their natural resources through the safekeeping of productive organic farms.”

“We are pleased to be able to make this announcement in this very difficult economic and public health environment. That said, we continue to need funds to protect other parcels in the Green Corridor that are at clear risk for development,” said land trust President Bill Kraekel. “For us to succeed in keeping Fairfield County’s serene pockets of rural beauty which we know and love, we will need more people to step

forward as Dan has done to make this financially possible.”

The land trust is in the process of raising additional funds to help with the acquisition, including submitting a grant application to the Connecticut Department of Agriculture, and will keep you and the public informed as plans for enhancing the property unfold.

“There is still much to do,” said our Executive Director David Brant. “Our mission is protecting open space and fighting the climate crisis. Land doesn’t save itself. Saving a working farm today will have benefits for many generations to come.”

Elaine Mintz, vice president of Fairfield County’s Community Foundation said, “Saving this farm is a perfect example of impact philanthropy teaming up with strong non-profit partners to bring a challenging and complex project to fruition.”

We want to thank recently retired land trust Board Member Ken Bernhard and Mark Kirsch, both lawyers at Cohen and Wolf, for providing pro bono legal services for the purchase of the farm.

Note: Gilbertie’s Farm is a business and working farm and not open for hiking.



The recent acquisition of the 34-acre Gilbertie’s Farm in Easton is adjacent to the Aspetuck Land Trust’s Randall’s Farm Preserve.

Update on the Green Corridor

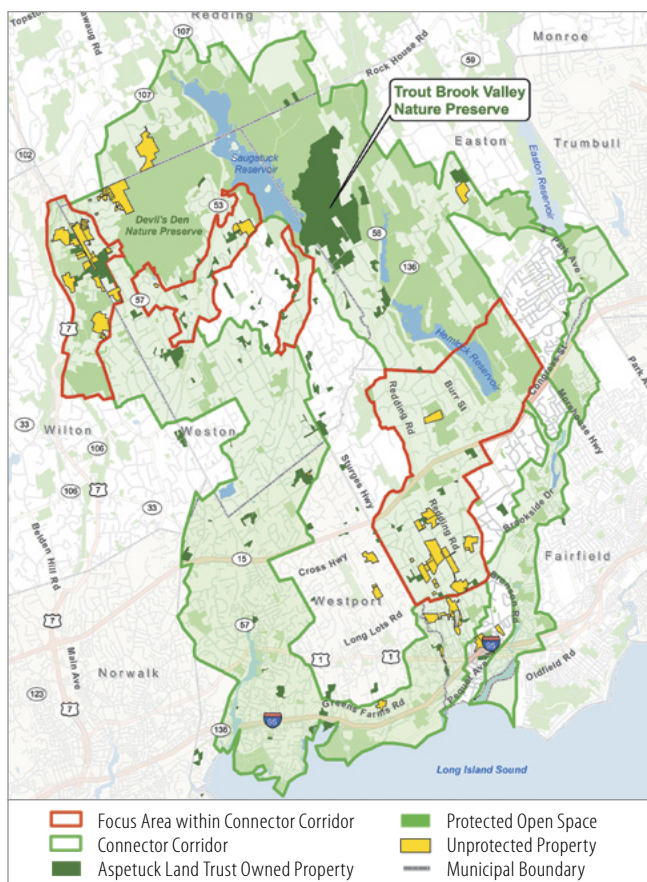
The 40,000-acre Green Corridor is Aspetuck Land Trust's vision to create a healthier community that better connects and engages our towns—including Easton, Weston, Redding, Wilton, Westport, and Fairfield—and safeguards our land, wildlife and water resources for generations to come. The best action we can take locally to combat the climate crisis.

The Green Corridor has two major components:

Land Protection: Preserving the last large undeveloped open spaces in our towns has been our core mission for 54 years and something we will always do. We have a proactive plan in the Green Corridor to save our remaining open spaces before they are developed and gone forever.

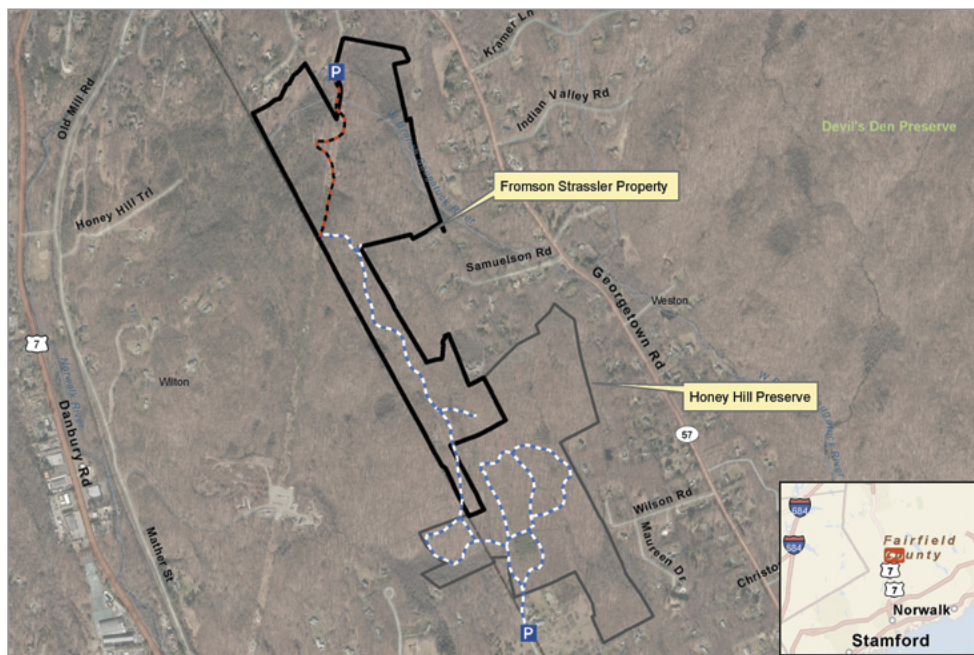
Through strategic conservation mapping, years ago we identified 42 properties totaling 805 acres to protect in the Green Corridor. After two years of negotiation, we acquired the second one: the 34-acre Gilbertie's Farm in Easton. Our first was the 38-acre addition to the Honey Hill Preserve in Weston in 2017.

Now our focus continues on negotiations to acquire the 85-acre Fromson Strassler property owned by the town of Weston. It will connect to our existing 119-acre Honey Hill Preserve. We have received three grants for the acquisition: \$625,000 from



The Green Corridor is Aspetuck Land Trust's vision for a greener, more sustainable world.

the CT Department of Energy and Environmental Protection, \$400,000 gift from the Daniel E. Offutt III Charitable Trust and \$79,000 from the Connecticut Wetland In Lieu Fee Program. This property is a key parcel in the 705-acre Weston Wilton Forest Block the land trust is protecting along the border of those two towns.



We have raised \$1.1 million for the 85-acre Fromson Strassler property. Make a donation today to help us reach our goal of \$1.3 million.

Land Stewardship: A huge majority of land in our towns is owned by private homeowners. The Green Corridor includes a wide-reaching program to educate homeowners to create more biodiversity in their yards, providing stepping-stones for nature between our larger protected properties. *Westport Lifestyle* magazine recently featured our efforts on its cover (see page 7).

Green Corridor: Saving the Planet One Backyard at a Time

By David Brant, Executive Director, Aspetuck Land Trust

When the Aspetuck Land Trust was founded in 1966, climate change wasn't even part of our lexicon. And we certainly couldn't imagine the Earth plummeting into climate crisis in our lifetimes.

Turns out our conserving 150 properties of open space on more than 1,900 acres of land was just the right thing to do in the face of a changing climate.

We've now extended our mission to save more land by involving private homeowners in Westport, Weston, Wilton, Fairfield, Easton, and Redding. The initiative is all tied to fighting the climate crisis. It's called the Green Corridor.

The Green Corridor emerged out of Aspetuck Land Trust's involvement in a regional conservation partnership, "The Hudson to Housatonic Initiative," organized by Highstead in Redding, a local non-profit conservation group. Our Board of Directors took this larger regional perspective and applied it locally to the four towns we serve.

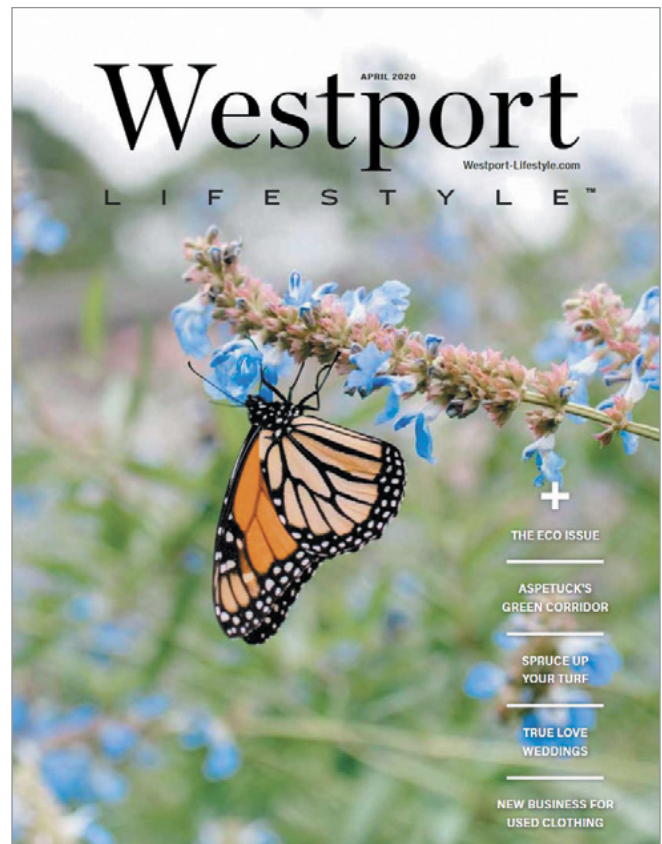
Maintaining the natural biodiversity of open land is now recognized as key to mitigating some of the worst effects of climate change: the wholesale death of pollinators that keep our food growing and our bird populations stable.

Have you noticed fewer insects splattered on your car windshield at night? Do you hear as many bird songs as you once did? What has happened to all the fireflies?



Karalyn Lamb photo

Song Sparrow feeding young, thanks to biodiversity in the backyard.



Mindy Briar photo

The Green Corridor initiative was the cover story of Westport Lifestyle magazine's April 2020 issue.

More than 40% of insect species are declining and a third are endangered. The bird population has declined by 3 billion since the 1970s. These diminishing populations is directly linked to developed land having fewer native plants feeding fewer insects and pollinators, which feed fewer birds.

The problem is our perfect suburban yards. We all like grass, but our prized golf course yards are biological deserts that don't provide food or habitat for insects to thrive. Add chemical pesticides and herbicides to the mix and you have a perfect recipe for insect and bird decline and a collapsing ecosystem.

While the Aspetuck Land Trust still conserves open land, we're bringing some of that same Earth-saving biodiversity to the tens of thousands of smaller pieces of land—suburban yards—where every homeowner can make a difference!

Homeowners should think of themselves as landowners with an important role to play in repairing our world. Local actions create large scale impact and everything matters.

We want to change the way people think about and take care of their yards. Seems simple but it's a revolutionary concept in the suburbs!

Continued on page 8

Continued from page 7



Mockingbird fledgling on Serviceberry bush

The land trust isn't calling for you to plow under all your neatly mowed grass. Just do simple things like plant more native plants and shrubs and trees, reduce pesticide use and transition to organic lawn care.

We hired Mary Ellen Lemay, a refugee from Big Pharma with a new master's in environmental management from Yale, as director of landowner engagement to educate and inspire people about the Green Corridor. On our website aspetucklandtrust.org she has gathered all the resources you need to start transforming parts of your yards today:

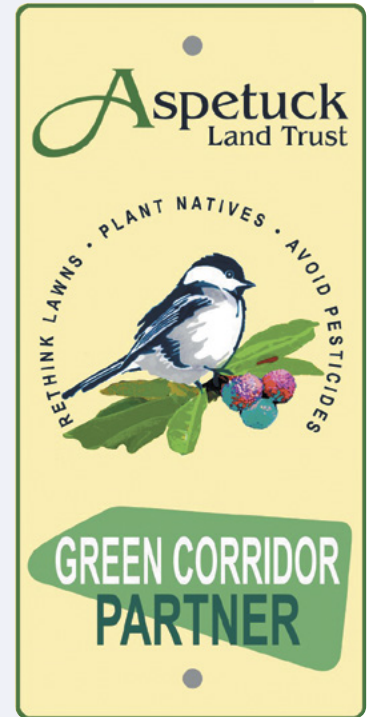
- How to rethink your lawn
- Where to buy natives
- How to plant them
- How to replace your current pesticides and herbicides
- Carefully selected and committed landscapers who will do it all for you

We ask homeowners to take the Green Corridor Pledge and offer an attractive metal plaque to put on their mailboxes to tell their neighbors. Our goal is to have 500 homeowners take the pledge in 2020 and snowball to large-scale participation from there.

Join us to save the planet one backyard at a time!

Visit aspetucklandtrust.org/homeowners to take the Green Corridor Pledge and we will send you this attractive metal mailbox sign to tell your neighbors you care about protecting the planet. And maybe they will join you!

Help us reach our goal of 500 Green Corridor homeowner partners by the end of 2020.



A TBV Love Story

By Sherri Daley

Logan and Stratton met in Boston and fell in love. They visited Trout Brook Valley and fell in love, again. To hear more about their move to Fairfield to a house with enough yard to accommodate gardens that attract bees, butterflies, and other pollinators visit aspetucklandtrust.org/TBVLoveStory.

Their goal: "We want to be part of the Green Corridor and help get more people our age involved in conserving and protecting open space."



Corona Virus

A Challenge and an Opportunity

During this crisis, we made the decision to stick to ALT's mission to keep our preserves open for the benefit of the public. We scrambled to hire part-timers and engage volunteers to deal with the crush of visitors and their cars after most towns closed their beaches and parks. We kept our 44 hiking preserves open every day, right up to today.

Subsequent scientific research, reported in *The New York Times* on May 16, revealed that we had done exactly the right thing: Being outdoors is now considered the safest place to avoid Covid-19. People all around us knew that before the official word. We received dozens of phone calls and emails from people saying how happy they were that we worked so hard to keep our open spaces open. Here's a small sample.

"With so few open spaces to hike during these times, I cherish ALT's preserves. A special thanks to Ranger Jim Wood and others at ALT who have been working hard to monitor and control the crowds."

"Thank you. Also discovered Poindexter Preserve plus a boulder to read on near the parking at Randall's Farm. Who knew it would take shelter in place to push the envelope beyond Trout Brook Valley? I've been enjoying ALT for over 16 years; it's a gem. You've all done an amazing job managing it."

"In a time of uncertainty, ALT has courageously continued to offer a haven for calm reflection amid bubbling streams, rustling leaves and singing birds."

"Thank you for keeping the ALT preserves open. We can only imagine how hard you have been working to control the parking situation and dog walkers."

"I had such a nice time birdwatching at Newman-Poses today. I can tell it has seen more use this spring, and everyone I encountered was appreciative of both the day and the space! We stepped off the path for each other and kept our distance but in a friendly way. Thank you. I will donate."

"Want to THANK you and the Aspetuck Board for keeping the preserves open during this unprecedented health crisis. I don't need to tell you how important getting outside, particularly in the wonderful atmosphere of nature, is to me. We're delighted Aspetuck preserves are open at a time when getting into nature for good health, both physical and mental, is more important than ever."



Lou Bacchiocchi photos

In Memoriam Bruce LePage

By David Brant, Executive Director

Former Aspetuck Land Trust board member and Executive Director Bruce LePage died on May 14, 2020 with his family by his side. Bruce was a key leader in the growth and success of Aspetuck Land Trust over the years.

He was working as a sales executive with IBM in 1983 when he was asked to join the land trust board of directors. Ten years later in 1993, he became executive director. He said it was the best retirement job anyone could ever have. He retired from



Laura Modlin photo

Bruce LePage in Trout Brook Valley, Easton.

the land trust in 2008. He remained a Trail Steward at the Randall's Farm Preserve in Easton, a property he helped protect. Bruce brought his business experience from IBM to improve the land trust's operations, and he loved working outdoors, surveying properties and blazing trails.

Bruce was instrumental in guiding the land trust through its largest acquisition in 1999, the 730-acre Trout Brook Valley Preserve, part of the 1,009-acre Trout Brook Valley Conservation Area in Easton and Weston. Bruce said saving Trout Brook Valley was the best thing he ever did in his life. We will soon be naming a trail in the jewel in our crown to honor Bruce LePage, one of the people most responsible for creating it.

When he left the land trust, Bruce said, "I always loved the outdoors. I was a Boy Scout. I lived in the woods when I was a kid. I'd run out my back door and run through the woods to get some kids over on the other side and we'd play in the woods all day long. My wife used to play in the field where Bill Clinton's house is today, and we saw it get developed and disappear. That's one of the reasons I love the Aspetuck Land Trust. That can happen here."

I remember the sandwiches he used to get slathered with butter at the old Greiser's market in Easton. His dislike of "unscrupulous developers." In my first week on the job, he drove me to all 140 properties the land trust owned. It was a dizzying week and I got car sick from all the stopping and starting. I had big shoes to fill in Bruce...and I am still trying to fill them.

All the people who hike in Trout Brook Valley and many of Aspetuck Land Trust's other preserves owe Bruce a debt of gratitude. His legacy will live on in the lands he protected that give joy and solace to people every day.

Please join us in honoring Bruce LePage

- 1. The Bruce LePage Conservation Fund** will be used to support an annual Aspetuck Land Trust intern interested in land preservation and conservation, Bruce's passion.
- 2. The Gilbertie's Farm Fund** will be used to support Gilbertie's Farm in Easton, a 34-acre working organic farm recently protected by Aspetuck Land Trust. Bruce loved Easton's farms.

Visit aspetucklandtrust.org/BruceLePage to make a memorial gift.



Brian Russell, Red Shoe Film photo

Trout Brook Valley orchard, Easton.

Leave a Legacy

Protect the places you love by making a gift to the Aspetuck Land Trust in your estate plan. By naming Aspetuck Land Trust as a beneficiary of your will, living trust, or retirement account, your gift keeps on giving to generations yet to come. To recognize our special legacy supporters and their planned gifts, we created the Aspetuck Land Trust Open Space Legacy Society.

Let us know when you have set up a planned gift, so we can make you a member of the Society. As a member, we will plant a blueberry bush in your name, and you will be invited to periodic Open Space Legacy Society activities. Upon receipt of your bequest, we will recognize you by including your name on a permanent "Legacy of Open Space" memorial in the orchard of the 1,009-acre Trout Brook Valley Conservation Area overlooking Long Island Sound.

For more information contact David Brant

203-331-1906 or dbrant@aspetucklandtrust.org or visit aspetucklandtrust.org/SaveLand/PlannedGiving



Lou Bacchiocchi photo

Fresh blueberries from Aspetuck Land Trust's blueberry patch are available for picking by Aspetuck Land Trust members. Become a member to enjoy.



2019 At a Glance

- Preserved 34-acre Gilbertie’s Farm in Easton for \$2 million.
- Protected a 2.3-acre property on Woods End Lane in Weston, donated by Kevin Bartlett.
- In final stages of preserving 85-acre Fromson Strassler property in Weston. This property is the largest parcel in the 705-acre Weston Wilton Forest Block we are protecting.
- Partnered with Earthplace in Westport to build a model native landscape with 2,000 native plants, grasses, and shrubs with support from a \$10,000 grant from the Westport Woman’s Club. The model native landscape will showcase native plant options for homeowners.



Nancy Moon photo

- Designed model native landscape with Aris Land Studio at Aspetuck Land Trust’s Wildflower Preserve in Southport. Planting scheduled for Fall 2020. Shown below are Wildflower Preserve benefactors Raphael and Robbie Hodgson of Southport.



Laura Modlin photo

- We are developing a model native landscape at the Caryl and Edna Haskins Preserve in Westport. Planting is scheduled for Fall 2020.

- Hosted Haskins Lecture in November for 300 people featuring Doug Tallamy, the guru of backyard biodiversity and author of *Bringing Nature Home* and *Nature’s Best Hope*.



- Organized 24 Green Corridor educational programs.



- Created the Green Corridor Landscape Partner Program to engage leading landscape companies already promoting practices that create backyard biodiversity. We want to thank these local professional landscaping companies for their leadership.



- Launched a partnership with growers of native plants—including the Northeast Organic Farming Association and Planters Choice—to increase the supply of them for homeowners to plant in the Green Corridor.



Sefra Alexandra photo

2019 Financial Highlights

MEMBERSHIP CATEGORIES

New Members (Separate from the summary below):	193	\$106,743
Friends \$0-49	73	1,827
Individual and Family \$50-99	305	15,719
Naturalists \$100-499	470	69,439
Trailblazers \$500-999	82	43,414
Stewards \$1,000 +	80	280,935
Individual Members	1,010	411,334
Legacy Gifts	2	210,000
Foundations and Grants	12	298,523
Patagonia Action Works Grant	1	178,539
		\$1,098,396
Restricted Income: Belknap, Gilberties, Green Corridor		-\$312,747
Total		\$785,649

	2019 Actual	2020 Operations Budget
REVENUE		
Membership Income	\$411,334	\$455,150
Legacy Gifts	210,000	10,000
Restricted Grants: Including delayed land acquisition grant from CT DEEP	247,934	62,000
Unrestricted Grants and Other Income	77,023	50,400
Patagonia Action Works Grant	178,539	
Total Income: Including Land Acquisition Grants, Belknap Preserve	\$1,124,830	\$577,550

	2019 Actual	2020 Operations Budget
EXPENSES		
Property Acquisition Expenses	\$35,764	\$10,000
Stewardship of Properties	144,420	150,000
Promotions	20,825	25,500
Operational Expenses and Professional Fees	53,936	92,750
Program and Administrative Expenses	196,320	221,506
Total Expenses	\$451,265	\$499,756

2019 ENDOWMENT FUNDS	Main Account	Restricted Account	Land Stewardship Fund	Land Acquisition Fund
Beginning Balance	\$1,713,876	\$1,258,859	\$119,780	
Donations and Grants	1,029			\$50,000
Investment Income	325,040	265,360	25,642	2,126
Reallocation	-300,000			300,000
Land Purchase: Gilberties				-100,000
Ending Balance	\$1,739,945	\$1,524,219	\$145,422	\$252,126

Note: Revenue and expenses are unaudited and rounded to the nearest dollar.

ALT Members

Friends, Individual and Family Membership \$0-99

Rita Adams
 Ralph & Lorraine Adams
 Marliese Aguele
 Janet Aley
 Janine Alianiello**
 Lorraine Anagnost
 Robert Anderson
 David Anderson & Coleen O'Shea
 Howard & Helene Andrews
 Eric & Kathleen Appellof
 Elaine Appellof & Jerry Saunders
 Heidi Armster & Dean Sanderson
 Harborview Road Neighbor Group
 Bahman & Andrea Azarm
 Kasia Babinski
 Mr. & Mrs. Russell Bailas
 Claire Baker
 Jennifer Balbes
 Frances Baldwin
 Mr. & Mrs. Michael W. Banten
 Colleen Mulrooney Barker
 John Barry
 Eugene & Roberta Bauchner
 Susan Beallor & Stuart Snyder
 Ms. Sarah Bell
 Gail & John Bell*
 Karen & Alan Benway
 Bill & Pat Blaufuss
 Bradley Blesie & Teresa Turvey*
 Patricia Blundell & Jonathan Whitbourne
 Patricia Bogie
 Alessandra & Bob Bonafide
 Mr. & Mrs. William D. Bouton
 Kathryn Braun
 Eileen Brennan & Albert Caronia
 Elisabeth H. Breslav
 Mr. James F. Bromer
 Ron & Diane Brunelle*
 Milan Bull
 Tom Buttke & Judith Waters
 Cynthia Cage
 Sharon & Steven Canale
 Meaghan Carey
 Lynn Carlson
 Claudia Carson
 Eric & Lauren Carter
 David Castle
 Gene & Celeste Cayer
 Lynn Chalk
 Mr. Timothy Paine Chaucer
 Roberta & Robert Ckarj
 Dr. & Mrs. George V. Clift, M.D.
 Robert Colvin
 Julie Cook
 Mrs. Lilla Cooper
 Mark Corcoran
 Janet Coughenour
 Scott Craighead
 David Crawford**
 Mary Crean & Steven Holm-Hansen
 Margarita Silva & Thomas Cushing*
 John D'Ausilio
 Alexander Dacey
 Thomas Dailey
 Wendy Daly
 David Dean
 Mr. & Mrs. Thomas A. Decerbo*
 Mario Del Conte
 Rima Demarias
 Chris & Karen Demeter
 Dale Demner
 Kevin DeSanty
 Nina J. DiFrancesco
 Gil & Connie Ditkoff
 Mr. & Mrs. Casimir Dobkowski
 Mark Drummond
 Sheila Duffy
 Cynthia Dunn
 Martha Durham*
 Severn Parker Duvall Jr.
 Patty Eilenberg
 Mark Eisenberg
 Sarah Evans
 Jeanne Evans*
 Jane Eyes
 Bret Factora
 Robyn Fairclough & Marty Levine
 Harry & Pattie Falber
 Alice Falkowitz**
 Dorothy Felske
 John Field
 Ellen Flynn
 Jonna Fonda
 Robert Ford
 John & Cara Forgione
 Walter Fowski*
 Carl & Holly Franquet
 Michelle Friedman
 Edward Fusco
 Mrs. Elizabeth Gaynor
 Robert Geary
 Colleen Gillon
 Melissa Gladstone
 Bruce Glaser**
 Mrs. Elena Goff
 Patrick Goldschmidt
 David Goldstein
 Adam & Jen Goodman
 Christopher Gorder
 Emily Gordon
 Bill & Helen Gore
 Dr. David & Arlene Gottlieb
 Kathryn Gray
 David Green & Maureen Graney
 Howard & Joyce Greene
 Mary Ellen Butkus Hart
 Thomas & Corina Havard
 Christine Hawthorne
 Mr. & Mrs. Daniel R. Hennessey
 Elizabeth Higgins
 Bob Hinckley
 Richmond & Bonnie Hoxie
 Johanna Hughes**
 Donald Hulnick & Nancy Moore
 Dana Johnson
 J.R. Janda
 Christopher S.J. Jennings
 Chauncey Johnstone
 Irene Juthnas**
 Steven Kaplan
 David Kaufman
 Boris Keppler
 Marjory Klotz
 Barbara Kocher
 Christina Morin Koether
 Kristy & John Kofron
 Ron Krassin*
 Martin & Roberta Krauthamer
 Peter & Carleen Kunkel**
 Laura Lamorte
 Tina Landau
 Charles Landau
 James Lane
 Mr. & Mrs. Andrew Langlois
 Roger Lasky
 Karin Layton
 Tim & Wendy Leahy
 Michael LeDuc
 Margaret Lee
 Nikki Lehman
 Dr. & Mrs. Kevin Lenhart
 John & Sylvia LeShane
 Ms. Gabrielle Levinson
 Jeffrey Levitt
 Ian Lewis
 Michael Liebow
 Mary Randolph & Paul Linderfer
 Kenneth Lisk
 Ted Lockwood*
 Helga Lose
 Renata Lose
 Jane & Joel Lubin
 Charlie & Kris Lynch
 Dr. John & Phyllis Machledt
 Alexandra Mack
 Christopher Macklem
 Kathy & Dan Magner
 Thomas & Valerie Smith Malin
 Judy Malin
 Katherine Maloney
 William Maloney
 Robert Marotti
 Christine Marsh-Rijssenbeek
 Carola Marte
 Edwin Martin
 Suzan Maxey
 Brian May
 Anthony McDowell
 Brian McGovern
 John McNamee
 Robert McWilliams
 Barbara Meder
 Lori Meinke
 Diane Melish & Alex McNab
 Bryan & Christina Mellick
 Lydia Menendez
 Robert Merritt**
 Laurajean & David Meyers
 Carol Mikesell
 Kevin Milmore
 Leslie & Giuliano Minasi
 Marlowe Mitchell
 Michael & Deirdre Moore
 Susan & John Moran
 Christian Morrison
 Florence Mraz
 Charlie & Joyce Muller

*Blueberry Patch Sponsors ** Patagonia Action Works Matching Grant

Scott Munroe	Jonathan Sawitsky	Ross Vassallo	Bruce Audino*
Peter & Linda Murphy	Seth & Alison Schachter	Megan Donaher Ventrella	Robert Auer**
Morgan Murray	Susan Schaller	Carla Vickowski	Mr. & Mrs. Vincent L. Auriemma
Wendy & James Muschett	Louis Schede	Ellen & George Visneyi	Robert & Ruth Ayles**
Peter & Sandy Nathan	Lois G. Schine	Nicholas & Victoria von der Wense	Dorothy Baekey
Glenn, Noelle & Alex Newell	Morton Schomer	Jesse & Jill Vose	David Baker**
H.Q. Nguyen	Tammara Schriefer**	Lucy Walker	Mr. Patrick Baker
Bruce Nichols**	Barry & Susan Seigerman	Robert & Donna Walker	Scott Banta
Mr. & Mrs. Humphrey Nichols	Brian Sharlach	Betty & Tim Walker	Violette & Philip Barasch**
Nicole Nieparent-Ciaburro	Gail Sheriff	Mr. Michael D. Wallace	Nancy Barrer & Larry Gall
Jennifer Noelle-Berg	Ms. Jane E. Sherman	Kathleen Walsh	Linda Batchelder**
Maria & Eric Nordstrom	Donald Sherwood	Denise Walsh	Mr. & Mrs. Drummond C. Bell
Annette & Cheryl Norton	Phyllis & Morton Silverberg	Rodney T. & Judith Wasel	Ms. Pamela Benepe**
Maureen O'Brien	Dmitry Skoybedo	Dr. & Mrs. Dennis Wasson	Debbie L. Benner
Adam Ofer	Matt Slattery**	Mr. & Mrs. John W. Watkins	Evan Berger*
Natalie Ollier-Stolzenbach	Michele Snapper	Jamie Weber	Alexis Bernard**
Cornelia Olsen	Anders Soderstrom**	Jonathan Webster	Roberta Berns
Niels Olsen	Vivian Sorvall	Alan Wegener	Jim & Mary Jane Berrien*
Lori Pace	Mr. & Mrs. Pearson Spaght	Gerald M. Weinstein	Mr. Timothy W. Bezler
Dr. Raymond & Patricia Panda	Jessica Spector	David Weisberg	Mrs. Naomi Bleifeld
Morgan & Grant Patrick	Diane Stein	Drew Weisberg	Caryn Bocchino**
Debbie Pearlman & Bob Lessler	Catherine Stein	Ernest Wiegand	Roger & Louise Bohler*
Robert Perless	Jean & Alec Stevens	Janet H. Williams	Deborah & Girome Bono*
Wendy Pieper	Steven B. Stieglitz	Joan Winter	Carolyn Book
Nick Pisarro	Liz Stokes	Marvin Witte	Edward Botwick**
Mr. & Mrs. Scott Powell	Alissa & Don Stolz	Dori Wollen	Amy & Aaron Bowman
Scott Powell	Marian C. Stone	James Wood	Serge Boyce
Joshua Prince	Samantha Stout	Ted & Lorraine Yakush	Jamie Brown*
Claude & Karen Priolet	Michael Strange	Richard & Margaret Zeldes	Laura & Gordon Brune
George Pugliese*	Dr. Gerald Strassberger	Dr. Jon & Lauren Zirn	Eileen Buckley**
Jane Albano Purcell	Edward Strong**	Lawrence & Rebecca Zlatkin	Tyler Buckley**
Nina Riccio	Don Stuart		Lisa & Ryan Burke**
Martha Rising	Nina Sutton		Ralph & Eleanor Burke*
Tim & Jenny Robson	Diane Sutherland		Dr. J. Randolph Burnham
Monica Roche	Ariane & Jeff Tallman		Ward Burns
Ed Rodbro	Nathalie Taranto		Calvin Burwell
Mike Rodell	Christina Taylor*		Sally Cadoux*
Holly Rogers & Zoran Hruskar	Dana Taylor		Carmine & Karen Calabrese
Penelope Ross**	Sue Teyan		Christian Calemmo*
Dana Rossi	Aileen & Robert Thompson		John Carew*
Bonnie Rotelli	Richard Tomasovic		Patricia & Thomas Carey
Huw Rothwell	A. Morris & Jennifer Tooker		Kenneth Carlson
Pam Rouleau	Caroline & Steven Trock		Joanne Carlton**
Donald & Darlene Rubenstein	John & Susan Tschirhart		Michael & Lisa Carpenter
Jennifer Rubin	Mr. & Mrs. Solomon Turiel		Thomas & Letitia Carter**
Ron Rudolph	Phyllis & Michael Turins		Ms. Ann Cathcart
Elaine Rust*	Priscilla & Ken Twombly*		Andrei Chahine**
Laura & Steven Salma	Anthony Tylutki		Kyle Champney* **
Virginia V. Sanford	Peter & Karen Valenti		Walter & Jeanette Ciciora*
Tara Sanft Kahn	Josh & Lisa Valinsky		Gabi Coatsworth Wilson
Judy & John Sarsgard	Ursula Van Arnam*		Larry Cobrin
Terence Sauer	Dirk & Tove Vanderblue		David Cohen**

Naturalists \$100-249

Gail Abrams**
 Margot Abrams
 Sara Adams**
 Rhea Adler & Michael Vincelli
 Louise Albrecht*
 Robert Aldrich & Sarah Kaplan
 Catherine & Victor Alfandre**
 Molly Alger
 Jane Allen
 Pam & David Allon**
 Jeff & Jeanne Altman
 Dave Ambrose*
 Carol Ances & Burton Grad**
 Abigail Anderson
 Michael & Susie Anderson
 Tom & Jan Andrews**
 Jon Angel*
 Andrew Aspen**
 Jane W. Atkinson

Mark Cohen**	Robert Fox	Dr. & Mrs. Robert J. Hobbie	Karen Lange & Stuart Gagnon
Jann Colabella*	Michelle Fracasso	Robert Hoch & Laura Schwemm*	Edward Laska
Ann Jones Cole	Maria & Carlo Fraioli*	Mary Hogue & Guy Gleysteen**	Emily Laus & Alan Eugley
Relly & Andrew Coleman**	Judy & Keith Frey*	Maria Rickert Hong**	Tyler Lee*
Patrick Comins**	Ed & Lisa Friedland	Anne & Hap Hoover	Emily Lehrman**
Ron Corwin & Beth Blumenthal	Joan & Jeremy Frost*	Jonathan Alexander & Julia Horowitz	Kathryn Lemmon
Mr. Lincoln W. Craighead	Peter Galant	Lynn Humphrey**	Bruce & Abby LePage
Karen Crape	Luke Garvey	James & Claudia Humphrey	Mr. & Mrs. John Levinson
Jeffrey Crean**	Johanna Garvey*	Rich & Kara Hunter	Zorba & Kristi Lieberman
Christopher Crosby	Mr. & Mrs. William Gault	Barbara & Edward Hutchins Jr.	Bill Lomas**
Andrea Cross	Karin Giannitti	Kitty Ijams & Clement Butt	George Loucas
Rachel & Joe Cross	Mr. Nathaniel W. Gibbons	Alyssa Israel	Marc Luxemburg
Martha Curtis**	Mark Gilrain	Karen Jacobs**	Ellen Lynch
Vincent & Nicky D'Agostino*	Justin & Melissa Giorlando**	Jalna Jaeger & David Callan	Kevin Mabley
Jay de Castro**	Nancy Gold	Warren Jahn**	Mr. & Mrs. Robert MacQuarrie*
Paul & Roberta Delano**	Peter Gold	Lloyd Richard & Judy James	Ed & Julia Mally
Katharine DeLong	Ed Perrault & Laurie Goldberg**	Chris Johannessen**	Dave Manning
Dan Delventhal	Jerry & Betsy Goodwin	Bruce Johnson**	Lucia H. & James Marion**
Victor & Roanna DeMasi	Joel Gordon**	Mr. & Mrs. Gary Johnson	William Marshall
Debra De Vries-Dalton**	Nancy Moon & Steve Gordon*	Dana & Virginia Johnson	Todd & Denise Martin**
Nanette DeWester	Mr. & Mrs. Roy Gosse	Brenda & Mark Johnson	Samuel & Heike Martin*
Jeffrey DeWitt*	Katharine Graves**	Michael Johnston**	Mr. & Mrs. George Masumian
Peter Diefenbach**	Stuart & Susan Green**	Linda & Douglas Johnston	Brian Mayer*
James & Ginger Donaher	Tiffany Donovan Green	Graham Jones**	Blair McCaw
Cash Donations	Michael Greenberg	Jack Kadden	Robert & Julie McClenathan
Nancy Doniger**	Mitchell Greenberg & Judith Shapiro	Carol Kagdis*	David Greenberg**
Dr. & Mrs. William Dragan	Adam Greenberger**	Mr. & Mrs. Andrew Kail**	Peter McGinnis**
Mr. Andrew Drewatolitsch & Ms. Amanda Montgomery	Tom Greene & Terri Singer	Carol Kane*	Matthew & Joseph McGlynn
Robert Driscoll**	Brian Griffin*	David Dear & Victoria Kann	James McGrath**
Cathy & Adam Dunsby	Melissa Gryspeerdt	Steven & Sherry Kaye**	Fara McLaughlin*
Mrs. Henry B. duPont III	Thaddeus Habza	Elisabeth Keane**	Tom McManus*
Jacqueline Duvoisin**	Hope & Alvin Hageman	Sean & Deirdre Kelly*	Regina & John Mello
Tricia Owens & Mike Dylag	Madelon Hall**	Arnold Klipstein**	Patricia Mennitt
David & Susan Earle**	Robert Halstead*	David Koch	Debbie & Evan Merberg**
Peter & Susan Eastman	Mr. Robert E. Hamm	Mark & Debra Koenig	Phillip & Janet Merriss*
Easton Garden Club	Kim Haney	Jeffrey Kohn	Andrea Metzner
Ken Edgar	Sally Harold	Peter Kolbrener**	MaryAnn Meyer**
Todd Edwards*	Dr. Patricia Hart	Millicent Krisak	John Meyer
John & Amanda Elliott**	Jay Ludy & Eileen Hart	Mr. & Mrs. Scott Kriskey**	Shaina Meyer
David Ellis	Dayna & Arin Hayden**	John T. Kristy, VMD	Mr. William M. Miller
Joel & Arline Epstein	Robert Haydu	Rick Krollman	Lois Miller*
Gerard A. Etzel	Ms. Harriet Heineman	Beth Krueger*	Mr. James M. Mindling
Peter Evensen**	Dr. & Mrs. Warren Heller*	Jack & Janet Kruse*	Laura Modlin
William Ewert*	Hemphill Family	Tracy & Karl Kuikowski	Salvatore Mollica
Fairfield Garden Club	Joe Henderson	Henrietta & Robert Lachman	Duvian Montoya*
Margaret Farley	David & Rosanne Hermenze**	Mr. William F. Lacy	Alicia Mozian**
Margaret Roe & Jay Fellows*	Sandon Hess*	Evan Ladouceur*	James Mullen**
Matthew Finkle & Grace Cho	Dalma Heyn*	Warren & Lisa Lagerloef*	Ann Munnelly
Kerry Fitzgerald	Sarah Hickson	Steven Lamb	Ed & Bonnie Murphy
Linda Fitzgerald	Karen Hinch**	Ms. Alice M. Lamberson	Jeremy Nance
Timothy & Pam Foarde**	Bonnie Hirschfeld*	Ronald Landis	Louise & Michael Nardone*
Mr. & Mrs. John H. Foster			Pat Naylor & John Cottrell*

*Blueberry Patch Sponsors ** Patagonia Action Works Matching Grant

Jenifer Nields**
Mimi & David Nulf*
Elaine O'Keefe & Mark Bisson**
Fran & Ed O'Neill
Paul O'Brien
Alex & Peter Oldershaw*
Christina Park
Greg Pategas**
Lisa Patel
Gretchen & Michael Patterson
Glenn Payne
Sallie & Nicholas Pecora-Saipe**
Ron & Carole Percival**
Marcia Pessolano**
Steven Phillips**
Tyler Philpott**
Ben Pianka**
Lynn & John Pokorny*
Kelly Pollard
Dean Powers
Jonathan Prager
Mary & Paul Pronovost
Carol Quinn & David Mayo
Marie Radcliff
Michael Radcliffe**
Beth & Jay Rand
Thomas Raskauskas
Ken Rath
Robert & Patricia Reath
Jan Redfern*
Mr. Douglas M. Reid
Ellen Resnick**
Joan & Tom Richardson
Diana Ringelheim
Mariya Rivera
Barbara Roche
Christal Rodenhiser & Yogesh Sadarangi
Susan Schneider & David Rosenberg
Sandra Rosenberg
Nancy Rosett**
Robin Rosic
Kevin & Pamela Rugg**
Michael Russnok* **
Pierre & Cathryn Saldinger
Craig & Kelly Saltzgaber
Sasqua Garden Club*
Elizabeth Scarborough & Peter Godfrey
Mr. William R. Schmitt
Art & Jayne Schoeller

Jack & Sally Schwerdtle
Brian & Elizabeth Schwinn*
Andrew & Cathryn Sebor
Bernie & Joanne Sezon* **
Larry Margarita Garces Shapiro**
Jocelyn Shaw
Steven & Amy Sheinberg**
Kim Sherwood
Anat Shiloach**
Rosalind Siegel
Kathy Siever
John & Michelle Sikorski*
Bora & Cynthia Sila**
Nancy & Irving Silverman**
Andrew Simone
Steven Skoler & Sandra Horback
Judy Sloan & Bruce Katz & Family
Toby & Mimi Smith**
Jennifer Smith
Gloria Smithson*
Kristian Snook
Dr. Irwin & Mrs. Elizabeth Sollinger**
Elizabeth & Peter Sosnow
Mark Spatz
John Stashinsky
Lyla Steenbergen
Ira Stein
Mr. Stephen Steinbrecher
Anne Stephan**
Joseph & Jean Stetz-Puchalski*
Mr. Robert M. Stilson
Rebekah Stratton Huber
Robert S. Strauss
Joseph G. Strolin Jr.
Julian Stroud
Ted & Patti Stypinski**
Kathleen Suchy
Karin & Jim Sugerman*
Katherine Sullivan*
Robert & Anne Svensk
Winfield & Winifred Swarr
Theodore L. Sullivan & Ms. Faith Taylor
Susan Teicher*
Neil & Danielle Teplica
Barbara Thomas**
Mr. & Mrs. David Thompson
Jane H. Tierney*
Jennifer & Blake Titrud**
Mary & Steve Tomasiewicz

Andrea Turner & Albert Toth
Alexandra & Michael Turner
Dana & Peter Uhrynowski**
Carl Urbania
Mitzi & Edward Vaimberg
Claire Van de Berghe**
Anna Vaporis**
Chris Vatis
Barbara Vogel**
Brian Voytek*
Ash Waechter*
Wagenbach Family
Will & Maybette Waldron
Amanda Walker**
Dava Waltzman**
Amy Watson
Maria & Ivan Watson
Audrey & Richard Webb
David Wegweiser**
William Weiss**
Matthew Weiss
Toby Welles**
Richard Welter
Richard Werner
Diane Whitbread*
Steve White
Frances White & Harry Evans
Doug & Deidre Williams
Carolyn Wilson
Nancy Wilt & William Preinitz
Alfred & Margaret Wirtenberg**
Wiktor Wozniak*
Melanie Wyler**
Vicky & Al Zaleski
Douglas & Helmi Zarookian
Anthony Zemba**
William & Amy Zima
Krissy Dorn & Vincent Zito
Mr. & Mrs. Richard A. Zucker

Naturalist \$250-499

Sarah Adair
Pippa Bell Ader & David Ader
Jim & Lisa Allison**
Jeff & Jeanne Altman**
Ray & Carolyn Rauth Arnold
Louis & Lisa Bacchicocchi**
Ms. Margie Golden & Mr. Russell Baris**
Mr. William Bartosik
Barbara Belknap
Kirby Brendsel

Wiser & Debbie Brown
Debra Browne**
Matthew Byer
Carol Cate* **
Felix Charney
Jerry & Bernadette Chieffalo**
Alice Cooney**
William & Laura Damm**
Jo Ann Davidson
Christopher Delaney
Michael Tomashefsky & Alice Ely**
Princie & Bob Falkenhagen**
Debrah Farentio
Mr. & Mrs. John P. Franzen**
Michael & Haley Friedman
Vanessa Frosini**
Leandro S. Galban III**
Linda A. Giers
Dan Glass**
Prashanti Gogineni & Ramachandran Cherukuri
AJ & Susan Hand
Michael Hansson**
Jeff & Miriam Hauser
Andrew Herbst
David Hertan & Claire Hurley
Jonathan Hochhauser*
Gretchen Hoffmann**
Mr. & Mrs. Richard M. Hoyt
Tom & Sandy Hyde
Alison James
Greg Kesler
John Kistler* **
William J. Kupinse Jr.**
Norman & Celeste LaCroix
Mr. & Mrs. Carl Leaman
Mary Ellen & Art Lemay**
Serge & Donna Lewi
Stephanie Lofaro-Gerlach* **
Ms. Marilyn Lord & Mr. James Meisner
The Macklems**
Bob Marzik & Alice Caldwell
George McCormick
Ms. Mary Lou McGuire**
Roy & Carol McKay**
Kristan & Lloyd Nash**
John O'Malley
Evelyn & David Quigley**
Andrew Rosenberg
Esther Rothenberger*
David Saussy**

Charles Shaeffer
 Robert Skerritt
 Mr. & Mrs. Steve R. Smith
 Chris & Sara Spaulding
 Ramesh Subramanian & Christine Vetter**
 Megan Svensen*
 Kathleen Synnott
 The Schettino Family* **
 Deborah & Rudolf Thunberg**
 Teresa McManus & Brian Truskowski
 Ryan Tucker & Kyaiera Mistretta**
 Ms. Florence Vannoni*
 Linda Vaughan*
 Donald Wainright**
 Jeffrey & Diane Warren*
 Mary Clay Fields & Louise Washer
 Pete & Janet Wolgast
 Nathaniel Yordon**
 Susan Zaveruha

Trailblazer \$500-999

Bermuda Surf Association
 Kenneth & Alice Mulligan Bernhard
 Misty Beyer
 Douglas & Pat Bilinski**
 Bonnie Botwick & Arnold Klipstein**
 Lynne Burgess* **
 Celia & Fred Campbell-Mohn
 Mr. Robert F. Corroon Jr.**
 Nicolas Dacey
 Virginia & Jimmy Dean**
 Steve & Britt Ezzes* **
 Dr. J. Thomas Failla & Mrs. Kathy Failla
 Jeff Foster & Adrienne Burke
 Peter Gaboriault & Family**
 Jeff & Lori Galdenzi
 Mr. Michael Wiseman & Ms. Helen Garten
 Marcy & John Golden
 Lee Goldstein
 Joan & William Grabe
 Gardner Grant
 Greens Farms Garden Club
 Eva & Jim Grundy* **
 Rebecca Hoefler & David Dunlop
 Susan Jacobson & David Moskivitz

Thomas & Carol Johnson
 Bryan Judge
 David & Christine Juneau**
 Steve & Yvette Kohn
 Eva Kornreich
 Carol & Val Kratzman
 James & Amy Leahy
 Daniel Leavy
 Christopher Lewis
 Brian & Florence Mahony
 Andrew Maloney**
 Wesley & Lauren Soloff Malowitz*
 Alison & Sean Martin**
 Crozer Martin
 MBI, Inc.
 Candace Meader
 Mona Pine Monroe
 W. Stephen & Muffy Murray
 Sandra Nichols Ward
 Claudia & Peter Nielsen**
 Mr. & Mrs. Samuel J. Palmisano
 Stephen & Kellie Panus
 Denise Papay
 Amanda Parrish Morgan
 Leonard & Caroline Peterson
 Mary Petrie
 Jennifer & Philip Platek
 Kristen & Justin Plock
 Terrence & Kristin Purcell**
 Joseph Reardon
 Pamela W. Ritter
 William Gray & Diana Romney Gray
 Jonathan & Jeanette Rosen
 William B. Sawch
 Steve & Erica Scioscia**
 Chris Scully**
 Mrs. Margery S. Silk
 Elizabeth & Jeff Silverman
 Dr. & Mrs. Joseph F. Sproviero**
 Elizabeth & Jonathan Swallen
 Mr. & Mrs. David P. Sylvestro*
 Mr. Thomas R. Talamini
 Martel Rynderman & Robert Teltser**
 Hank & Cheryl Saipe**
 The Shack Sackler Foundation
 Michael & Katherine Tunstall
 Maria & Ivan Watson*
 Westport Garden Club
 Richard Wright

Stewards \$1,000-2,499

Aquarion Water Company
 Del Aury**
 Bill & Julia Bassett* **
 Robert & Gail Bedoukian
 Laszlo & Jill Birinyi Jr.
 Geoffrey & Melissa Bradshaw-Mack
 David & Jill Brant**
 Jason & Kimberly Brenner**
 Elise Bronzo
 Joan Byrne**
 Connie Belta Caruso
 Mr. Laurent & Wendy Weaver Chaix**
 Don Chaney**
 William & Elizabeth Chepolis**
 The Hotchkiss Family
 Cheryl Russ**
 Ms. Aili diBonaventura**
 Van & Wendy Dusenbury**
 Anthony Eason**
 Mr. & Mrs. Robert J. Eck
 Mr. & Mrs. R. Bradford Evans
 Paul Farrell & Paula Cleary**
 Rita Appel & Jonathan D. Fraade**
 Luisa Francoeur**
 Andrew Frankel
 Nikola & Todd Freeman
 Mr. & Mrs. Alfred Fressola**
 Jonathan & Leigh Gage**
 Alan & Judy Goldbecker
 Walter & Betsy Greene
 The Stewart & Constance Greenfield Foundation
 Lisa & Jonathan Hersch**
 Victoria Hornbostel
 Bill Humphrey & Nancy Saipe**
 Donald & Wendy Hyman**
 Tom & Carol Johnson**
 Chris & Andrea Kerin
 Bill Kutik & Nancy Breakstone**
 Gerry Lange**
 Mitzi Lyman & David Geronemus
 Charles MacCormack
 Edward & Debra Mahony
 Joseph McCartin**
 James McGrath Jr**
 David & Elizabeth McKinnis**
 S. Antoinette Morton-Dimes
 Pete & Jillian Muller

Raphael Elkind & Melissa Newman
 Alphonse & Judith Noe
 Ross & Ande Ogden**
 Ross Ogden, Sr.
 Judith & Brad Oren
 Tracy Pennoyer & John Auchincloss**
 Chris Petherick & Sue Shunta**
 Peter Petron* **
 W. Fergus & Davina E Porter
 Mr. & Mrs. Richard Ritzel Jr.**
 Liza Rosenthal & Richard Heller**
 Joseph Schnierlein & Lisa Palladino**
 Mr. & Mrs. William Sherlock Jr.
 Jay Sherwood**
 Stuart Sinclair & Sarah Lewis**
 Mr. & Mrs. Mark R. Slane**
 David & Christine Slump**
 Jim Smith**
 Mr. & Mrs. Steve R. Smith**
 Mario Smith
 Mr. & Mrs. Jonathan Sonneborn
 Susan & Timothy Steele
 Judy Sterling
 Scott & Michelle Mantello Thompson
 Mr. & Mrs. Patrick Toole
 Emily Hall Tremaine Foundation
 USDA GRANTS
 Jamie & Stephanie Veghte
 Colin Walklet & Heather Williams**
 Mr. & Mrs. Noel & Nancy Wallace
 Catherine Walsh**
 Channing & Leslie Wheeler
 Claire & Bill Wilkes

Steward \$2,500-4,999

Athletic Brewing Company LLC
 Mr. & Mrs. William Everett Jr.**
 Paul Greenberg**
 Darcy Stacom & Chris Kraus
 Marta Jo Lawrence
 Michal Locker**
 Irwin & Dorothy Nessel Foundation
 Mary Pajonas**
 Grace K. Salmon Trust
 Christian & Eva Trefz**

*Blueberry Patch Sponsors ** Patagonia Action Works Matching Grant

Stewards \$5,000-9,999

Barts Tree Service**
Mark P. Conese
Alan & Betty Feldman
Leslie Gold**
Mike Herman**
Robert & Bonnie Kreitler
Kevin & Sally MacGuire
Mr. & Mrs. John P. Richardson Jr.
Mrs. Rosemary Weaver

Stewards \$10,000 +

Kevin B. Bartlett**
William C. Bullitt Foundation,
Inc.
Connecticut Department of
Energy and Environmental
Protection
Amy & Steve Harlacker**
Ted & Selina Huber**
Raphael Hodgson**
In-Lieu Fee Program
Christine Knuth
Bill & Eileen Kraekel**
Nancy Lawton
Jacqueline Littlejohn**
Robert & Cindy McHugh**
Newman's Own Foundation
Recommended by Lissy
Newman
Newman's Own Foundation
Recommended by Clea
Newman
Shelter Hill Foundation, Paul &
Elizabeth Shiverick**
Mr. & Mrs. Charles Stebbins**
The Estate of David Storrs
Lawrence & Mary-Lou
Weisman**
Westport Woman's Club

In Memory Gifts

IN MEMORY OF COLLEEN BANTEN

Mr. & Mrs. Michael W. Banten

IN MEMORY OF MARY-HELEN BETTRIDGE

Jonna Fonda

IN MEMORY OF EMMA S. CATHCART

Ann Cathcart

IN MEMORY OF DR. CYRUS CHESS

Barbara Kocher
Barbara Meder
Diane Sutherland

IN MEMORY OF GOWAN DACEY

Alexander Dacey

IN MEMORY OF ADAM GLASS

Dan Glass

IN MEMORY OF BILL GREENWOOD

Jon Angel

IN MEMORY OF ELIZABETH JANE BOWEN HANSEN

Janet Williams

IN MEMORY OF TOM LAWTON

Nancy Lawton

IN MEMORY OF NICHOLAS LEPLA

Jack Kadden

IN MEMORY OF JULIA LANG MALLY

Ed & Julia Mally

IN MEMORY OF CAROL MIKESSELL

Emily Mikesell

IN MEMORY OF KAYTIE O'HARA

Jeff Foster & Adrienne Burke

IN MEMORY OF TOM PETERSON

Kirby Brendsel

IN MEMORY OF KATE REARDON

Joseph Reardon

IN MEMORY OF JILL ROCIO

Nina Riccio

IN MEMORY OF RICHARD ROULE

Rita Adams
Ron Corwin & Beth Blumenthal
Jann Colabella

IN MEMORY OF KIM RUMFORD

Gabi Coatsworth

IN MEMORY OF DAVID SCHMERZLER

Brian & Elizabeth Schwinn

IN MEMORY OF FRANCES SIMMONS

Kevin Milmore

IN MEMORY OF GEORGE STERLING

Kelly Pollard
Judy Sterling

IN MEMORY OF KEITH STOKES

Marvin Witte

IN MEMORY OF DAVID STORRS

David & Jill Brant

IN MEMORY OF PAUL VAN ORDEN

Lisa Patel
Pam Rouleau

IN MEMORY OF MAUREEN WHITEMAN ZLATKIN

Lawrence & Rebecca Zlatkin

In Honor Gifts

IN HONOR OF THE ASPETUCK LAND TRUST BOARD

Ken & Alice Bernhard

IN HONOR OF DAVID BRANT

Bonnie Botwick & Arnold
Klipstein

IN HONOR OF ELISE BRONZO

Jamie & Stephanie Veghte

IN HONOR OF THE BUTKUS FAMILY

Mary Ellen Butkus Hart

IN HONOR OF ROBERT CATE

Carol Cate

IN HONOR OF CHRIS DEMETER

Karen Demeter

IN HONOR OF LANDO DOMINICI

Brenda & Mark Johnson

IN HONOR OF GRANDPA JOE

Gail & John Bell

IN HONOR OF STUART GREENFIELD

Joan & William Grabe

IN HONOR OF WARREN & CAROLE HELLER

Dr. & Mrs. Warren Heller

IN HONOR OF DEBRA HARING

Wesley & Lauren Soloff
Malowitz

IN HONOR OF BRUCE LEPAGE & PRINCIE FALKENHAGEN

Lea & David Sylvestro

IN HONOR OF GARY MENNITT

Patricia Mennitt

IN HONOR OF LOUIS MILLER

Louis Miller

IN HONOR OF THE CRAIG & RACHEL OSHRIN FAMILY

Fara McLaughlin

IN HONOR OF BARBARA ROCHE

Emily Laux & Alan Eugley

IN HONOR OF NANCY SAIBE & BILL HUMPHREY

Lynn Humphrey
James & Claudia Humphrey
Hank & Cheryl Saibe
Nicholas & Sallie Pecora-Saibe

IN HONOR OF SUSAN & STEVEN SMITH

Kathleen Synnott

We apologize if we inadvertently misspelled or omitted your name, and hope that you will reach out to us so that we may correct our records.



Aspetuck Land Trust
P.O. Box 444
Westport, CT 06881
Established 1966

aspetucklandtrust.org



ALT Board member Tom Johnson, AKA the Blueberry Czar, takes care of the blueberry patch beloved by land trust members.

Lou Bacchiocchi photos

Become a Member of Aspetuck Land Trust

Your tax-deductible donation is vital and makes an impact on our towns. Please use the enclosed envelope to send your gift of support to Aspetuck Land Trust or visit our secure website at aspetucklandtrust.org to donate by credit card.

Connect @ f

Become a Fan of Aspetuck Land Trust on Facebook. It's a great way to stay up to date on our latest happenings. Sign up on our website to receive our e-newsletter. Engage with us on Instagram.



Printed using recycled paper stock