



Aspetuck

Land Trust

2018 Annual Report

Dear Aspetuck Land Trust Member,

The “ask” from our executive director was brief. Write the opening for the 2018 annual report. Keep it to 450 words. Sum up the last 12 months and what’s ahead.

Well, the short answer is: busy, successful, moving along smartly.

Why? Our members are wise and generous. They care. And, we have a plan.

Here are details, packed into four information buckets—land, community, housekeeping, people.

Land: Our Board of Directors voted to move forward with a big vision and strategy for protecting land and improving the environment in our 4-town region. We aim to protect the last remaining open spaces in our towns, connect them to other protected lands where practical and possible and simultaneously educate homeowners about how they can steward their yards in ways that create more biodiversity for pollinators like bees and butterflies. The goal: create an ecologically healthy 40,000-acre Green Corridor extending through Weston, Westport, Easton, Fairfield and Wilton. Our Land Acquisition Committee is in active negotiation mode right now regarding a farm in Easton (34-acres), an 85-acre property in Weston which is part of a 705-acre forest block we are protecting on the Weston Wilton border, and an additional two parcels in Wilton totaling about 15 acres that are also part of the forest block. In Fairfield, we are looking to protect 270-acres of undeveloped land in the Southport Greenfield Hill area and have initiated outreach with those landowners. We’re also exploring a capital fundraising campaign to help us realize our Green Corridor vision. There’s much more work to do but we are excited about our future.

Community: UConn Professor and wildlife biology expert Dr. Tracy Rittenhouse told a capacity crowd at the Westport Unitarian Church just why we see so many black bears in Connecticut these days. She was the 2018 Haskins Lecture speaker. (Our 2019 Haskins Lecture speaker is Professor Doug Tallamy of University of Delaware. He’ll talk Nov. 7, 2019 at 7:30 pm at the Saugatuck Congregational Church in Westport about steps we all need to take to create more biodiversity in our yards to stop the ongoing near extinction of insects vital to a healthy, diverse ecosystem.) With our summer interns from Staples High School

we beautified the entrance to the popular Newman Poses Preserve in Westport. We hosted an open space summit in the blueberry patch in Trout Brook Valley in concert with the Connecticut Land Conservation Council which was attended by eight General Assembly lawmakers. We organized numerous educational hikes for the public including our “Walk the Forest Block” hike at the newly protected 38-acre Belknap Preserve in Weston and which expanded our Honey Hill Preserve to 119-acres.

Housekeeping: We reorganized our officer nomination process. Our Nominating Committee morphed into the Nominating and Governance Committee, adding policy development to their purview. We approved important new guidelines regarding affirmative action and equal opportunity; an ethical code; a whistleblower policy; and clearer roles and responsibilities for our Board of Directors and other policies to help enhance governance.



Donald Hyman, President, Aspetuck Land Trust.
Photo credit Nancy Moon.

People: David Brant celebrated his 10th anniversary as our executive director! We added several valuable new board members. (Worker bees I might add.) Lou Bacchiocchi moved up to become our full-time Land Stewardship Director keeping our preserves in good shape while Jim Wood continued as our Ranger in the vast Trout Brook Valley Conservation Area. We hired Mary Ellen LeMay to be our part-time Landowner Engagement Director to educate the community on sustainable landscape practices to enhance the ecological health of our yards and extend the benefits of the Green Corridor. Alice Cooney continues providing support as our Administrator and our volunteer Database Coordinator Joan Byrne deserves many thanks for her help and support. Board member Bill Kraekel, a major force shaping the Green Corridor Initiative, agreed to be a candidate for President to succeed me. I'm retiring from the Board June 30 as my eight-year term comes to a mandatory conclusion. Believe me when I tell you that it hasn't ever been a burden. It's always been an honor. Every good wish to all of you!

Sincerely,

Donald Hyman

President, Aspetuck Land Trust

If you are not a member, we've made it easy to support us by enclosing a pre-addressed envelope. Or you can donate online by visiting our secure website at www.aspetucklandtrust.org. All donations are tax-deductible. Help us preserve and protect our little corner of the planet!

About the Cover

Aspetuck Land Trust's 40,000-acre Green Corridor will make it easier for pollinators like native bees to thrive by engaging homeowners to create more eco-friendly landscapes.



Board Members

President

Donald Hyman

Vice President of Planning

William Kraekel

Vice President of Land Acquisition

Ross Ogden

Vice President of Land Management

Joe Schnierlein

Vice President of Membership

Maria Dempsey

Vice President of Finance

Robert W. McHugh

Chair, Nominating Committee

Aili DiBonaventura

Secretary

Bill Kupinse, Jr.

Executive Director

David Brant

Landowner Engagement Director

Mary Ellen Lemay

Land Stewardship Director

Lou Bacchiocchi

Administrator

Alice Cooney

EASTON

Bill Kupinse, Jr.

Ross Ogden

FAIRFIELD

Jeff Galdenzi

Don Hyman

Christopher Kerin

Nancy Moon

WESTON

Kirby Brendsel

Maria Dempsey

Tom Johnson

Tracy Penoyer

WESTPORT

G. Kenneth Bernhard

Walter Greene

Melissa Newman

Heather Williams

AT-LARGE DIRECTORS

Aili diBonaventura

William Kraekel

Jacque Littlejohn

Robert W. McHugh

Joseph Schnierlein

HONORARY DIRECTORS

Bruce LePage

Robert Larson

Aspetuck Land Trust Annual Meeting From Idea to Action: Update on the Green Corridor

June 13, 7-9 pm

Fairfield Museum & History Center, 370 Beach Rd.

You are invited to Aspetuck Land Trust's 53rd annual meeting of the members.

At last year's annual meeting we asked Aspetuck Land Trust members to provide feedback on our vision for a Green Corridor. We heard your excitement for this concept and have been working hard to make the Green Corridor a reality.

This year, we will discuss the progress we have made on the Green Corridor, specifically our plans to engage thousands of homeowners to create more eco-friendly landscapes.

Aspetuck Land Trust Members will be asked to approve a slate of directors - Class of 2023 - which consists of Robert McHugh (At-Large), Bill Kupinse Jr. (Easton), Mike Tunstall (Weston), Amy Harlacker (Fairfield), Peter Petron (At-Large), Tom Failla (At-Large).

Refreshments will include pizza from Skinny Pines Wood Fired Pizza Truck in Easton and local craft beer from Aspetuck Brew Lab. This is a fun and informative meeting. Join others who care about our planet as much as you do!

RSVP at aspetucklandtrust.org/events.

The Green Corridor



We want to save our world one conserved acre and one homeowner at a time.

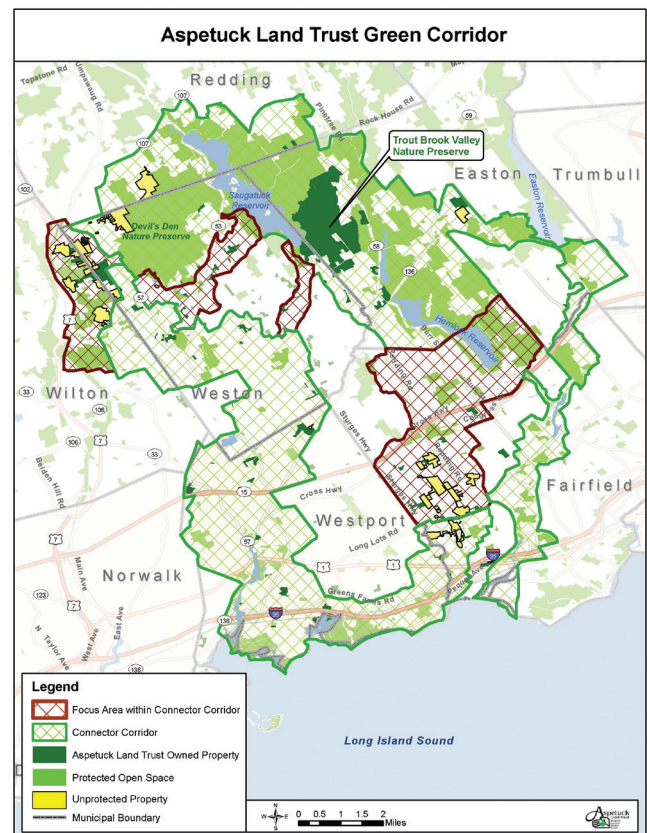
By David Brant, Executive Director

The 40,000-acre Green Corridor is Aspetuck Land Trust's vision to create a healthier community that better connects and engages our communities and safeguards our land, wildlife and water resources for generations to come.

The Green Corridor is designed to provide a coordinated, strategic approach to protecting and stewarding our remaining open spaces and linking them for the greater preservation of our natural resources, enjoyment of our residents and protection of our eco-systems.

The Green Corridor has two major components:

Land Protection - Preserving the last large undeveloped open spaces in our towns is the land trust's core business and something we will always do. We now have a proactive plan in the Green Corridor to save our remaining open spaces before they are developed and gone forever. Ours may be the last generation to save these lands.





Through our strategic conservation mapping in the Green Corridor we have identified 32 properties for protection totaling 730-acres. This includes Gilbertie's Farm, a 34-acre farm in Easton which incorporates open space, a working farm, a pond and wetlands. The farm is adjacent to our 34-acre Randall's Farm Preserve donated by Mrs. Henry B. duPont III. Known throughout the community, this farm is an important resource.

We are also working on protecting the 85-acre Fromson Strassler property in Weston which is a key parcel in Aspetuck Land Trust's plan to create a 706-acre protected forest block on the Weston/Wilton border. The property is home to two State of Connecticut Species of Special Concern, the Eastern Box Turtle and Spotted Turtle. This property was appraised at \$1 million and we currently have a grant pending with the State of Connecticut's Open Space Watershed and Land Acquisition Program to purchase this property. The state will provide up to fifty percent of the appraised value.

Land Stewardship – We have a biodiversity crisis. Our insect populations are declining because they don't have enough habitat. This is happening because of a lack of native plants, monoculture lawns and overuse of pesticides.

We want homeowners to see their yards as living stepping stones that provide food for wildlife like butterflies and bees that are making their way through the landscape and the Green Corridor. We plan to educate and motivate homeowners to create more biodiversity in their yards by planting native plants, switching to organic or zero-emissions lawn care services, and reducing pesticides. Involving thousands of individual homeowners will extend the overall benefits and beauty of the Green Corridor and will magnify and accelerate our conservation impact.

We think people want to do something to make a difference in our local environment. The good news is they can! And we want to help.

We hired a part-time landowner engagement specialist, Mary Ellen Lemay, to advance this initiative. **What have we done thus far?**

- Designed a market research survey to measure current attitudes and practices of homeowners. This will be used to inform our marketing and outreach efforts.
- We are creating 2 model native landscapes to demonstrate eco-friendly landscape practices for homeowners who want to make these changes in their own yards. ~~~

- We are developing educational workshops and marketing materials and resources to educate homeowners about native plants and organic lawn care.
- We are giving talks to local garden clubs, businesses and other non-profit groups to spread the word.
- We are partnering with other local nonprofits and businesses to leverage and advance this initiative.
- We are fundraising for this initiative and recently received a \$10,000 Ruegg grant from the Westport Women's Club, among other support from individuals.

As a land trust, we think we should be talking with homeowners about stewardship. We want to connect people to the earth through their yards and in the process create healthier yards for our pets and kids and for the bees and butterflies that move through the landscape. Having this conversation with homeowners helps us leverage our mission and increase our impact in the community.



Painted Lady Butterfly

Everyone can make a difference, whether it's donating land or taking care of their yards in more sustainable ways. If you don't live on the Corridor you can still make a difference in your yard!



Visit the Green Corridor page on our website to learn more and to see if you live in the Green Corridor.



A single pair of breeding chickadees must find 6,000 to 9,000 caterpillars to rear one clutch of young.

What homeowners should know about biodiversity in their backyards

- Scientists have warned of a human-caused sixth mass extinction on Earth.
- The extinction rate for insects is eight times faster than for mammals, birds and reptiles.
- Insects are a food source for many animals, are critical pollinators and recycle nutrients back into the soil.
- Declining insect populations reduce a major source of food for birds.
- Our yards play a role in the declining insect populations, since many are now composed of grass and non-native plant species that don't provide enough food and habitat for insects.
- University of Delaware Professor Doug Tallamy states that "our suburban yards represent one of the last chances we have for sustaining plants and animals that were once common throughout the U.S."
- By educating suburban homeowners on how to stimulate more biodiversity by planting native plants and switching to organic lawn care, we can make a big impact on wildlife in our region. ~~~

Landowner Engagement Director **Mary Ellen Lemay**

Saving the planet after Yale Forestry School

When we decide to take on a challenge, we look to our friends and family for encouragement; and so it was with Mary Ellen Lemay, Landowner Engagement Director for the land trust, when she decided to go back to school at age 50.

“My husband was very supportive and proud.” Lemay, known to friends and family as Mel, grins as she remembers the day she told her husband Art and son Alex she had decided to study Forestry and Land Management at Yale in New Haven. She’d already earned her MBA from Fordham University - working fulltime at a multinational biopharmaceutical company and attending night classes - it took five years. She’d always been passionate about environmental protection. She volunteered as president for the Trumbull Land Trust in 1999. As Town Council Representative in the early 2000s, she drafted legislation to create the Trumbull Conservation Commission. In 2010, she was chair of the Conservation Commission. It was time to make another, more serious, commitment.

There was an imperceptible dip in the atmosphere, and then Alex, 12, voiced his concern. “Aren’t you too old to go back to school?”

Whatever pause that may have given Lemay, it wasn’t enough to deter her. She screwed her courage (and her sense of humor) to the sticking place and signed up.

“I was the oldest ‘kid’ in the class,” she recalls, “and it was one of the scariest things I have ever done.” She declares now that turned out to be one of the best experiences of her life.

Armed with an MBA, twenty years’ experience in the biotech industry, years of volunteer work for local conservation efforts, and a Master’s in Environmental Management from the Yale School of Forestry and Environmental Studies, Lemay was ready to help save the planet.

“Helping to enlist landowners to be part of the Green Corridor started with the Hudson to Housatonic Regional Conservation Partnership,” she says. “For almost 4 years I worked in Fairfield County, then Westchester County, spreading the message of the importance of creating corridors across the landscape for wildlife, clean water, and recreation. One of H2H’s most effective stewardship projects was the “Pollinator Pathway” which uses bees and butterflies to engage people in eco-friendly land use practices.”

Probably calling up her years in the pharmaceutical business, she concludes: pollinators are the ‘starter drug’ for people to understand how all living things in our yards are connected. Without the insects nothing on the planet could exist. The Green Corridor concept is a one of a kind advanced version of the pollinator pathway because it includes land protection and stewardship for all species like birds and mammals...the entire web of life. Aspetuck Land Trust one of the very first Land Trusts in Connecticut, to connect and heal the land in a Green Corridor model, and being part of it is like a dream come true!



Mary Ellen Lemay is helping Aspetuck Land Trust change the way people think about and take care of their yards.

A fierce advocate for environmental sustainability, Lemay enthusiastically shares ideas for everyone to be part of the Green Corridor. Shopkeepers can put out pots of flowering shrubs, homeowners can switch to organic lawn care and plant native plants in their yards, and landlords can create rooftop gardens for their tenants.

Son Alex is now 20 and a freshman at Mitchell College in New London. He may have been worried about his mom when she decided to do something he thought was reserved for high school seniors, but today he’s gotten used to her love affair with the planet. Besides, he says, “you’re never too old to follow your dream.”

Board of Directors

Ken Bernhard

Legal eagle, conservationist and ALT board member

Environmentalists usually approach their subject with a combination of enthusiasm, honest promises, and heartfelt joy. Ken Bernhard adds focused dedication, trust, and an educated get-it-done attitude.



Ken Bernhard and his wife Alice.

“It’s a family tradition.” said Mr. Bernhard recently in his Westport law office of Cohen and Wolf PC. “My dad was the original recycler.” While Ken exudes a comfortable, approachable professionalism, he can’t resist smiling when he talks about his father. “He used to use the backs of junk mail to write on, even his professional correspondence. My dad was an attorney and he often filed court papers using recycled paper. Judges could be seen smiling in open court when reading a motion he had handed to them and discovered that it had been written on the backside of an appeal for money from a random charity. Dad stamped everything he wrote on, “RECYCLED For Ecological Purposes.”

Before joining the board of the Aspetuck Land Trust, Ken served on the Environment Committee while representing Westport in the State Legislature from 1997 to 2005 and thereafter was Co-Chairman of the Connecticut League of Conservation Voters, a non-partisan environmental advocacy organization. In addition, Ken Bernhard brought years of valuable legal experience to his tenure on the board having been admitted to practice law in Connecticut and New York, the District Court of Connecticut, and the United States Supreme Court. While serving as a JAG officer in the U.S. Army, Ken taught criminal and constitutional law at West Point. Now, while still practicing law locally with Cohen and Wolf, he is a Senior Attorney with the Center for International Legal Studies and teaches constitutional law in foreign law schools such as in Bulgaria, Croatia, and Mongolia.

Fortunately for the ALT, Ken’s other interests overlap with the mission of the ALT to preserve the state’s valuable open spaces and to protect its endangered wildlife, again something he inherited from his father who, he adds off-handedly, “taught me to always carry trash bags so I could pick up garbage wherever I found it.

“When I learned that the acres of woodland commonly referred to as Trout Brook Valley were in jeopardy of being sold to developers by the water company, I knew I needed to advocate for and work with the ALT for its preservation as open space. I learned then what a terrific organization the ALT is and why it was ultimately entrusted with the stewardship of this incredible asset. Fortunately for me, my partners at Cohen and Wolf were terrific in supporting my efforts then and now by providing pro bono legal services to the ALT in subsequent land transactions and other related legal issues.”



Ken, an avid sailor, on one of his adventures.

Bernhard's interest in public endeavors is not confined to the protection of the environment. Over the past forty years, he has given his time and energy to helping the Westport Library, Earthplace, The Westport Historical Society, the Levitt Pavilion and most recently had himself appointed as An Animal Advocate representing the victims of cruelty in court cases where the sufferers cannot speak for themselves. One of his favorite endeavors has been working with his wife, Alice, as a foster parent to prospective guide dogs breed by the Fidelco Guide Dog Foundation located in Bloomfield and which is New England's only guide dog organization. "We only planned to foster one," he says, smiling, "but the only way to deal with the heartbreak when the first puppy went to work was to get another. The Bernhard's fostered seven. Alice went on to serve as Fidelco's marketing director for a couple of years and Ken is now on the Board.

"His contributions to the land trust have been legion. Ken and the law firm of Cohen and Wolf have done a tremendous amount for Aspetuck Land Trust and our community. Unfortunately, his board term expires this June," says David Brant. "He'll be sorely missed."

In his office, while being interviewed, Ken added, "I am not going anywhere and hope that I can be of some further help to Aspetuck Land Trust as it pursues its important work." ~~~~~

Land Trust Intern to study Exotic Animals at Tufts University

We want to wish Fairfield Ludlowe High School graduate Jackson Hemphill the best of luck as he goes on to Tufts University. Jackson installed and monitored Aspetuck Land Trust's wildlife cameras which were donated by former ALT board member Celia Campbell Mohn. Jackson plans to study veterinary medicine and exotic animals at Tufts. ~~~~~



Jackson Hemphill and Celia Campbell Mohn. Photo credit: Nancy Moon

Land Stewardship Director **Lou Bacchiocchi**

Protector of our lands

Take a bright morning walk through any of the Aspetuck Land Trust's preserves, and you could meet people carrying fishing poles or binoculars, picnic baskets, small dogs, cameras, or little guide books on birds and botany. You may pass dreamy, empty-handed hikers who come for the solitude, sunshine, and bird-calls.

Then again, you might come across Lou Bacchiocchi, trudging purposefully through the underbrush to get to a downed tree, armed with a chain saw and some aluminum wedges. "If I'm lucky, someone has taken a picture," said Bacchiocchi recently. "That makes it a lot easier to gear up. If I'm really lucky, the work assignment is near a wide trail where we can use a truck or an ATV to bring in tools and materials."

Clearing up trails and trimming low-hanging branches and dead tree limbs is only a small part of Bacchiocchi's job as Land Stewardship Director. He's the go-to guy for organizations like the Boy Scouts, local schools, universities, and corporate groups who want to arrange for interested nature-lovers to volunteer to work in the outdoors. "They get hands-on work experience and training; we get some help with labor-intensive, but no-experience-necessary, jobs." Bacchiocchi's hope is that some returning interns will someday sign on as supervisors and crew leaders.

He and Trail Steward Coordinator Van Dusenbury provide training and support to the volunteers who patrol the trails and report problems. Ranger Jim Wood reports to Bacchiocchi with rules compliance and general goings-on in Trout Brook Valley. Bacchiocchi oversees trail construction, mowing, fencing, signage, and bridge repairs. In addition, he's in charge of the budget, prioritizing expenditures, choosing contract labor, and initiating new projects like invasive species control and wildlife habitat improvements, and growing blueberries for our members..

He's an indispensable member of the Aspetuck community, but we almost didn't get him. "I was pre-med at Fairfield U.," he recalls, "and I even took a summer job at Yale New Haven Hospital's Surgical Pathology Department so I could get some work experience."

That gig cured him of his medical aspirations. He shifted gears to his lifelong love of the outdoors. He graduated from Fairfield with a BS in Biology and went on to the Yale School of Forestry. In 1983, he earned his Master's in Forestry and Land Management, after which he sweet-talked his high school sweetheart into marrying him and going to Colorado, a marriage adventure that has lasted 36 years.

"I did some logging in Colorado and started a firewood business, but eventually we wanted to come home to Connecticut."



Lou Bacchiocchi spreading woodchips at the blueberry patch.

Bacchiocchi never went too far from his love of trees. He took a position as Director of Sanctuary Operations at the Connecticut Audubon Society, a job which included managing the Christmas Tree Farm on Sasco Creek Road. "I still manage the farm," he says, smiling. "Thirty-eight years since I planted my first tree there."

It was an easy introduction to the Aspetuck Land Trust. He met people who, like him, loved the land and the things that live in it and grow on it. He signed on to do some patrolling and land management activities, mowing fields, constructing parking areas, erecting fences - and soon, he was hopelessly ours. No longer an employee of the Audubon Society and no longer a part-time contractor of 34 years, but the full-time Aspetuck Land Trust Stewardship Director, hiking trail lover, trees advocate, birds' nest locator, walking bridge repairman, trails maintenance man...and on...and on. ~~~~~



Trout Brook Valley orchard, Easton. Photo credit Brian Russell, Red Shoe Film

Leave a Legacy

Protect the places you love by making a gift to the Aspetuck Land Trust in your estate plans. By naming Aspetuck Land Trust as a beneficiary of your will, living trust, or retirement account, you can make a visionary gift that will conserve land for generations to come. To recognize our legacy supporters, we created the Aspetuck Land Trust Open Space Legacy Society to recognize people like you who have made a planned gift to Aspetuck Land Trust.

Individuals who have made a planned gift, and have let us know, will become a member of the Open Space Legacy Society. As a member we will plant a blueberry bush in your name and you will be invited to periodic Open Space Legacy Society activities. Upon receipt of your bequest to Aspetuck Land Trust we will recognize you by including your name on a permanent “Legacy of Open Space” memorial in the 1,009 acre Trout Brook Valley Preserve orchard overlooking Long Island Sound.



For more information contact David Brant at 203-331-1906, or dbrant@aspetucklandtrust.org or visit aspetucklandtrust.org/helpsaveland

Memorial and Honor Tributes

The Aspetuck Land Trust recently update the “Donor Page” of our website to expand our Memorial and Honor tribute options. In addition to making a cash donation to the ALT in the name of an individual or an organization you now can fund a bench (\$5,000), preserve kiosk structure (\$5,000), name a trail (\$50,000), or land (75%+ funding of the land) in a person(s) name. The wooden bench or wooden kiosk would include a memorial plaque, and the trail naming would include signage at both ends of the trail.

For further information please check out the website, speak with a board member, or contact the ALT office at (203) 331-1906. ~~~~~



In Memoriam David K. Storrs

By David Brant, Executive Director

Aspetuck Land Trust supporter and board member David K. Storrs passed away on March 3, with his family by his side.

For me, it's a personal loss. David was an adviser, friend and mentor to me over the ten years I've been Executive Director

of Aspetuck Land Trust. In fact, David was involved in hiring me in 2008. Over the years, we shared many hamburgers at Shake Shack discussing land conservation and how to do more of it. David was a great sounding board and was particularly excited about our Green Corridor Initiative. He said it was a big, bold vision that could have real impact. This motivated me to push forward.

David was an impressive person. B.A. from Yale, MBA from Harvard Business School. He was the first Director of Investments at Yale University where he restructured their endowment. He was President of Commonfund, a multi-billion investment management organization serving endowments, foundations, and non-profits. Most recently he was President and CEO of Alternative Investments in Southport.

David was all of these impressive things and more. He was a lover of frozen custard (a favorite of his at Shake Shack), a solid ping pong player and a world class sailor. He was a kind and gentle man who cared about people and the land and giving back. He will be missed and remembered by all those whose lives he touched. ~~~



David with my children at Shelburne Farms in Vermont which he and his wife Landon support.

2018 Financial Highlights

In 2018, we allocated resources to launch the Green Corridor Initiative. We increased support in 2019 to hire PT staff who will work on homeowner education and outreach in the community.

Contributions and income received from individuals, foundations and other sources totaled \$628,019. \$213,000 in foundation grants were earmarked for the acquisition of the Belknap property acquired in 2017. Income from individuals, foundations and grants not restricted to the Belknap Property totaled \$415,019. Operating Expenses were \$411,603.

The Main Endowment suffered losses of -5.82% due to prevailing market conditions in 2018, received \$2,089 in membership donations and \$161,497 (\$213,000 less land acquisition expenses of \$51,503) in grants towards the recapture of the cost of the Belknap property in Weston. The account ending balance was \$1,717,639. During the calendar year 2019 additional grants and pledges totaling \$202,497 for the Belknap Preserve acquisition will be received and allocations will be made to further offset the

original expenditure of the Belknap Preserve. Funds in this account are used for land purchases and extraordinary expenses not covered by membership contributions.

The Land Stewardship Endowment suffered losses of -4.43% due to prevailing market conditions in 2018 and ended with a balance of \$119,829. This fund may be used for major capital improvements, major repairs, legal defense, and ensuring public safety on the preserves.

The Haskins Preserve Endowment suffered losses of -6.16% due to prevailing market conditions in 2018, had disbursements of \$90,000 for the reimbursement of expenses related to preserve Maintenance (including the Dam), programming, and the Haskins Lecture series. The ending balance on December 31, 2018 was \$1,260,543. The state of CT has designated the man-made dam on the property as a Class B (Significant Hazard) dam. As a result, we need to remove the dam. The estimated expense for removal is approximately \$100,000 and will take place during 2019. ~~~

2018 Financial Highlights (cont'd)

MEMBERSHIP CATEGORIES

New Members (Separate from the summary below):	189	\$18,248
Friends \$0 - 49	66	1,075
Individual/Family \$50-99	353	18,332
Naturalists \$100-\$499	457	68,416
Trailblazers \$500- 999	62	34,168
Stewards \$1,000 +	63	170,162
Individual Members	1,001	292,153
Foundations & Grants	12	\$335,866
		\$628,019
Belknap Land Acquisition Grants: Restricted	2	-\$213,000
Total		\$415,019

REVENUE

	2018 Actual	2019 Operations Budget
Membership Income	\$292,153	\$302,000
Non Restricted Grants	75,366	49,053
Restricted Grants: Including Land Acquisition Grants, Belknap Preserve	260,500	312,500
Other Income	18,896	
Total Income: Including Land Acquisition Grants, Belknap Preserve	\$646,914	\$663,553

EXPENSES

Property Acquisition	\$15,151	\$30,000
Property Maintenance & upgrades	145,651	133,000
Program Implementation	99,357	101,000
Green Corridor Initiative	31,325	121,000
Administrative Costs	120,119	136,441
Total Expenses	\$411,603	\$521,441

2018 ENDOWMENT FUNDS

	Main Account	Restricted Account	Land Stewardship Fund
Beginning Balance	\$1,557,839	\$1,434,287	\$125,335
Donations and Grants	2,089		
Investment Income	-93,786	-83,744	-5,506
Programming and Maintenance- Reimbursement	90,000	-90,000	
Land Acquisition: Grants	161,497		
Ending Balance	\$1,717,639	\$1,260,543	\$119,829

Note: Revenue and expenses are unaudited and rounded to the nearest dollar.

**Individual and Family
Membership \$0 - 99**

Gail Abrams
Ralph and Lorraine Adams
Judith C. Albin
Janet Aley
Llewellyn Almeida
David Anderson and Coleen O'Shea
Robert Anderson
Howard and Helene Andrews
Melanie Andrews
Elaine Appellof and Jerry Saunders
Eric and Kathleen Appellof
Heidi Armster and Dean Sanderson
Mark Arons
Robert Auer
Bahman and Andrea Azarm
Mr. and Mrs. Russell Bailas
Mr. Mark Bain
Claire Baker
John Baker
Mr. and Mrs. Michael W. Bantzen
Violette and Philip Barasch
Ed and Joyce Barnhart
Jeremy Bassie
Peter Bassler
Eugene and Roberta Bauchner
Elizabeth Bechtold
John and Adrienne Beckmann
Ms. Pamela Benepe
Woody Bliss
Charlene Blount
Caryn Bocchino
Richard and Pamela Bochinski
Marlen Bodden
Alessandra and Bob Bonafide
Edward Botwick
Mr. and Mrs. William D. Bouton
Mr. and Mrs Bowen
Jessica Bram and Bob Cooper
David and Jill Brant
Mr. Louis F. Bregy
Kirby Brendsel
Elisabeth H. Breslav
Ron and Diane Brunelle
Mr. and Mrs. Robert Bruns
Tyler Buckley
Milan Bull
Lisa and Ryan Burke
Garth Butterfield and Nancy Held
Carmine and Karen Calabrese

Chase and Emily Cameron**
David Campbell
Steven and Sharon Canale
Michelle Cardello
Kenneth Carlson
Lynn Carlson
Mike and Lisa Carpenter
Claudia Carson
Eric and Lauren Carter
Thomas and Letitia Carter
David Castle
Carol Cate**
Ms. Ann Cathcart
Andrei Chahine
Lynn Chalk
Mr. Jeffrey Chasnow
Max Chayet
Peter Chemery
Deirdre Childs
David Cleveland
Dr. and Mrs. George V. Clift, M.D.
Sarah Cohen
Mark Cohen
Dr. and Mrs. Warren M. Cohn
Carrie Colangelo
Margaret Collins
Robert Colvin
Patrick Comins
Mrs. Lilla Cooper
Mark Corcoran
Scott Craighead
Jeffrey Crean
Mary Crean and Steven Holm-Hansen
Frank Cronson
Wendy Crowther
Margarita Silva and Thomas Cushing
Wendy Daly
John D'Ausilio
Phil and Sharon De Bruyn
Lee De Monico
Mr. and Mrs. Thomas A. Decerbo
Mario Del Conte
David and Susan Dellenbaugh
Katharine DeLong
Rima Demarias
Victor and Roanna DeMasi
Dale Demner
Marc DeMul
Jeffrey DeWitt
Nina J. DiFrancesco
Mia Dillon
Connie Ditkoff
Tim Ditlow

Megan Donaher Ventrella
Colin Doniger
Robert Driscoll
Cynthia Dunn
Martha Durham
Sev Duvall III
David and Susan Earle
Mark and Barbara Edinberg
Mark Eisenberg
Peter Elliot
Jeanne Evans
Dottie Evans
Alice Falkowitz
Dorothy Felske
John Field
John Fitzpatrick
Kusumarn and Michael Fleming
Ellen Flynn
Mr. and Mrs. John H. Foster
Mr. Walter Fowski
Robert Fox
Veronica Fulling
Brad Furman
Edward Fusco
Johanna Garvey
Mr. and Mrs. Verne J. Gay, III
Mrs. Elizabeth Gaynor
Dennis and Karen Ranzer Geelan
Jonathan Gelfand
Karin Giannitti
Colleen Gillon
Justin and Melissa Giorlando
Melissa Gladstone
Bruce Glaser
Tom Glines
Mrs. Elena Goff
Ed Perrault and Laurie Goldberg
Patrick Goldschmidt
Adam and Jen Goodman
Jenny Goodwyn
Peter Gordon
Bill and Helen Gore
Maureen Graney
Linda Grantham
Howard and Joyce Greene
Mr. Kenneth D. Greenwald
Stephan and Claire Grozinger
Donald and Ann Gustavson
Carol Hager
Dean Haines
Madelon Hall
Mr. Robert E. Hamm
Merry Hampton

Harborview Road Neighbor Group
Barbara and James Harman
Jay and Eileen Hart Ludy
Michael Harwood
Mary Hassett
Dayna and Arin Hayden
Dr. and Mrs. Warren Heller
Mr. and Mrs. Daniel R. Hennessey
David and Rosanne Hermenze
Maria Rickert Hong
Horticulture Club of Newtown
Johanna Hughes
Donald Hulnick and Nancy Moore
Barbara and Edward Hutchins, Jr.
Sarah Hutchison
Tony Hwang
IBM International Foundation
Warren Jahn
Lloyd Richard and Judy James
Ward and Teresa Jennings
Brenda and Mark Johnson
Nelson Johnson**
Alan Jones
Irene Karazin
Dan Katz
David Kaufman
Elisabeth Keane
Mr. and Mrs. John C. Kenedally
R. Shane Kennedy
Arthur and Margaret Kennedy
Boris Keppler
Marjory Klotz
David Koch
Peter Kolbrener
Marcia Kosstrin
Jason Koulouras
Martin and Roberta Krauthamer
Mr. and Mrs. Scott Kriskey
Rick Krollman
Mr. Christopher Kwong
Zizi Lacava
Laura Lamorte
Charles Landau and Kimberly Yonkers
Ellen Landowne
James Lane
Mr. and Mrs. Andrew Langlois
Dennis Larkin and Marge Josephson
Nancy Lefkowitz**
Dr. and Mrs. Kevin Lenhart
Mr. Andrew Lerner
John and Sylvia LeShane

Grayson LeVino
 Ms. Gabrielle Levinson
 Jeffrey Levitt
 Eliana Levy-Spira and Pablo Calderon
 Ian Lewis
 Michael Liebow
 Mary Randolph and Paul Lindoerfer
 Charles Linley
 Kenneth Lisk
 Bill Lomas
 Helga and Renata Lose
 Jane and Joel Lubin
 Lance Lundberg
 Charlie and Kris Lynch
 Dr. John and Phyllis Machledt
 Alexandra Mack
 Kathy and Dan Magner
 Judy Malin
 Thomas and Valerie Smith Malin
 Russell Mark
 Steven Martano
 Carola Marte
 Johanna Martell
 Scott Martin
 Todd and Denise Martin
 Joseph Martini
 Agnella Matic
 Suzan Maxey
 Brian May
 Barbara McCabe
 Michelle McCabe
 Robert and Julie McClenathan
 Mary McGee
 James McGrath
 Laura McKinnon
 Diane Melish and Alex McNab
 Kathleen and Stephen McNamara
 John McNamee
 Robert McWilliams
 Bryan and Christina Mellick
 Lydia Menendez
 Carolyn Meyer
 MaryAnn Meyer
 Shaina Meyer
 Laurajean and David Meyers
 Susan Miller
 Leslie and Giuliano Minasi
 Elizabeth Mitchel
 Michele O. Modugno
 Catherine Moffatt
 Salvatore Mollica
 Christian Morrison
 Mow Green - Dan Delventhal
 Vicki Muller
 Ed and Bonnie Murphy
 Peter and Linda Murphy
 Chris and Andrea Murtha
 Wendy and James Muschett
 Glenn Noelle and Alex Newell
 Bruce Nichols
 Mr. and Mrs. Humphrey Nichols
 Jennifer Noelle-Berg
 Maria and Eric Nordstrom
 Ross Ogden, Sr.
 Alex and Peter Oldershaw
 Thomas Oliver
 Victor Olmedo
 Cornelia Olsen
 Linda Olson
 Curtis Osborne
 Honi Papernik
 Mike Paris
 Geoffrey Parr
 Morgan and Grant Patrick
 Morgan Patrick
 Maureen Patten
 Debbie Pearlman and Bob Lessler
 Ron and Carole Percival
 Robert Perless
 Jay Petrow
 Pfizer Foundation Matching Gifts
 Stacy and Tom Prince
 Claude and Karen Priolet
 Charles and Judy Proctor
 Lauren Hauser and James Prosek
 George Pugliese
 Carol and John Rawls
 Mrs. Pam Richter-Lenon
 Martha Rising
 Karen Robbins
 David and Wilma Roberts
 Monica Roche
 Mike Rodell
 Holly Rogers and Zoran Hruskar
 Dr. and Mrs. Samuel J. Rosenberg
 Nancy Rosett
 Dana Rossi
 Bonnie Rotelli
 Josh Rothman
 Donald and Darlene Rubenstein
 Ron Rudolph
 Mark and Elise Russi
 Mitchell Sakofs
 Stephen Samoskevich
 Virginia V. Sanford
 Tara Sanft Kahn
 Judy and John Sarsgard
 Mr. Mark A. Sawers
 Jonathan Sawitsky
 Elizabeth Scarborough and Peter Godfrey
 Seth and Alison Schachter
 Lois G. Schine
 Craig Schorr
 George Schulz
 Jack and Sally Schwerdtle
 Mr. and Mrs. Richard Seclow
 Susan Settino
 Bernie and Joanne Sezon
 Larry Shapiro and Margarita Graces-Shapiro
 John Sharian
 Steven and Amy Sheinberg
 Donald Sherwood
 Laura Sherwood
 Debbie Shindell
 Phyllis and Morton Silverberg
 Nancy and Irving Silverman
 Maggie and Jon Silverstein
 Matthew Smith
 Richard and Elizabeth Solazzo
 Dr. Irwin and Mrs. Elizabeth Sollinger
 Mr. and Mrs. Pearson Spaght
 Harry Spear
 Catherine Stein
 Robert Maddox
 Mary and Mike Steinharter
 Jean and Alec Stevens
 Steven B. Stieglitz
 Liz Stokes
 Marian C. Stone
 Michael Strange
 Dr. Gerald Strassberger
 Alice Stratton
 Edward Strong
 Don Stuart
 Mr. and Mrs. Theodore Stypinski
 James Sullivan
 Matthew and Pamela Sulzicki
 George Synnott
 S. L. Taikowski
 Ariane and Jeff Tallman
 Nathalie Taranto
 Dana Taylor
 Christina Taylor
 Margaret and Alan Temple
 Neil and Danille Teplica
 Sue Teyan
 Barbara Thomas
 Aileen and Robert Thompson
 Jennifer and Blake Titrud
 Heidi Tonsberg
 A. Morris and Jennifer Tooker
 Norman Trepner and Susan Thomsen
 Mr. and Mrs. Solomon Turiel
 Phyllis and Michael Turin
 Alexandra and Michael Turner
 Priscilla and Ken Twombly
 Anthony Tylutki
 Carol Anne Valentine
 Josh Valinsky
 Peter Van Hagen and Caolyn** Davenport
 Jonathan Van Ryzin
 Dirk and Tove Vanderblue
 John Venezia
 Carla Vickowski
 Nicholas and Victoria von der Wense
 Jesse and Jill Vose
 Brian Voytek
 Donald Wainright
 Lucy Walker
 Amanda Walker
 Robert and Donna Walker
 Rodney T. and Judith Wasel
 Mr. and Mrs. John W. Watkins
 Audrey and Richard Webb
 Jamie Weber
 Jonathan Webster
 David Wegweiser
 Jon and Susan Weingarten
 Gerald M. Weinstein
 Beth Welch
 Toby Welles
 John and Ellen Weyrauch
 Ed Whitley
 Doug and Deidre Williams
 Janet H. Williams
 Jim and Musette Winton
 Alfred and Margaret Wirtenberg
 Dori Wollen
 Ted and Lorraine Yakush
 Viola and Eric Yee
 James Young
 Vicky and Al Zaleski
 Ken and Cathie Zimmerman**
 Dr. Jon and Lauren Zirn
 Vincent Zito

Naturalists \$100-249

Russell and Adina Abrahams
 Sara Adams**
 Micheal Vincelli and Rhea Adler
 Jonathan Aibel
 Louise Albrecht**
 Robert Aldrich and Sarah Kaplan
 Catherine and Victor Alfandre
 Molly Alger and Jay Dirnberger
 Katherine and David Allen
 Jim and Lisa Allison
 Jeff and Jeanne Altman
 Willis Altman
 Abigail Anderson
 Andrew Aspen**
 Aspetuck Brew Lab
 Jane W. Atkinson
 David Atlas
 Elizabeth Auber
 Del Auray**
 Robert and Ruth Ayles
 Louis and Lisa Bacchiocchi
 Dorothy Baekey
 Mr. Patrick Baker
 Frances Baldwin
 Scott Banta
 Nancy Barrer and Larry Gall
 Barts Tree Service**
 Robin Bates
 Stuart and Susan Beallor
 Snyder
 Barbara Belknap
 Mr. and Mrs. Drummond C. Bell
 Gail and John Bell
 Debbie L. Benner
 Richard and Nina Bentley
 Jim and MaryJane Berrien
 Mr. Timothy W. Bezler
 Raymond Bievenour**
 Mrs. Naomi Bleifeld
 Bradley Blesie and Teresa Turvey
 Roger and Louise Bohler**
 Deborah and Girome Bono
 Carolyn Book
 Serge Boyce
 Bob Derby and Elizabeth Bradley
 Joe and Thomas Braun
 Eileen Brennan and Albert Caronia
 Kathleen Brletic**
 Robert and Judith Brown
 Wiser Brown
 Debra Browne**

Laura and Gordon Brune
 Eileen Buckley
 Lynne Burgess**
 Ralph and Eleanor Burke**
 Ward Burns
 Tish and Don Burton
 Calvin Burwell
 Joan Byrne
 Sally Cadoux**
 Megan Camp
 John Carew**
 Patricia and Thomas Carey
 Mr. and Mrs. Joseph Carpentieri
 Mr. and Mrs. Scott Centrella
 Don Chaney**
 William and Elizabeth Chepolis
 Jerry and Bernadette Chieffalo
 Walter and Jeanette Ciciora
 Hayes and Clare Clark
 Clement Company LLC
 Jann Colabella
 Relly and Andrew Coleman
 Thomas and Doreen Collins
 Marty Conlon
 Fred Corrado
 Mr. Lincoln W. Craighead
 Karen Crape
 Christopher Crosby
 Andrea Cross
 Rachel and Joe Cross
 Martha Curtis
 Beverlee Dacey**
 Vincent and Nicky D'Agostino
 Sherri Daley
 William and Laura Damm**
 Mr. and Mrs. Robert R. Davidson
 Janine Davidson
 Jo Ann Davidson
 Virginia and Jimmy Dean
 Christopher Delaney
 Paul and Roberta Delano
 Janak Desai
 Jason Desser**
 Nanette DeWester**
 Jake Dibble
 James and Ginger Donaher
 Dr. and Mrs. William Dragan
 Cathy and Adam Dunsby
 Mrs. Henry B. duPont, III
 Jacqueline Duvoisin
 Tricia Owens and Mike Dylag
 Peter and Susan Eastman
 Ken Edgar
 Mr. Robert R. Edmiston

John and Amanda Elliott
 Larry Ellman
 Michael Tomashefsky and Alice Ely
 Joel and Arline Epstein
 Erik Erikson
 Gerard A. Etzel
 Steve and Britt Ezzes
 Abbe Fabian
 Dr. and Mrs. J. Thomas Failla**
 Robyn and Marty Fairclough
 Levine
 Marcia and Stephen Falk
 Princie and Bob Falkenhagen
 Lee Ann and John Fallet
 Margaret Roe and Jay Fellows
 Linda Fitzgerald
 Timothy and Pam Foarde**
 Maria and Carlo Fraioli
 Carl and Holly Franquet**
 Mr. and Mrs. John P. Franzen
 Julia and Keith Frey
 Ed and Lisa Friedland
 Michelle Friedman**
 Gordon Fulda
 Kathleen and Kenneth Fulton
 Peter Galant
 Leandro S. Galban, III
 Jeff and Lori Galdenzi
 Easton Garden Club
 Jennifer and Paul Gasbarro
 Mr. and Mrs. William Gault
 Edward Gerber**
 Sal and Marie Gilbertie**
 Mark Gilrain
 Adam Gold
 Peter Gold
 Adam Gordon
 Nancy Moon and Steve Gordon**
 Robert and Lois Gosse
 Dr. David and Arlene Gottlieb
 Carol Anne Ances and Burton Grad
 Nancy and Thomas Grant
 Katharine Graves
 Mitchell and Gretchen Green**
 Stuart and Susan Green
 Tina and Peter Green
 Adam Greenberger
 Tom Greene and Terri Singer
 Melissa Gryspeerdt
 Hope and Alvin Hageman
 Marcia Hamelin
 John Hamlin**
 Sally Harold
 Gordon Harris

Mr. and Mrs. James Hawley
 Robert Haydu
 Ms. Harriet Heineman
 Joe Henderson
 Andrew Herbst
 Paula and Robert Herzlinger
 Dalma Heyn**
 Dr. and Mrs. Robert J. Hobbie
 Bob Hoch and Laura**
 Schwemm
 Jonathan Hochhauser
 Gretchen Hoffmann**
 Anne and Hap Hoover
 Jonathan Alexander and Julia Horowitz
 James and Claudia Humphrey
 Lynn Humphrey
 Tom and Sandy Hyde**
 Kitty Ijams and Clement Butt
 Eric Jacobs
 Karen Jacobs
 Jalna Jaeger and David Callan
 Chris Johannessen
 Bruce Johnson
 Dana and Virginia Johnson
 Mr. and Mrs. Gary Johnson
 Ingeborg Katschwar Jones
 Mr. and Mrs. Andrew Kail**
 Richard Kalt
 Carol Kane**
 Judith Kaslove
 Timothy Keating
 Bill Kenny
 Marilyn Kish**
 Mark and Debra Koenig
 Jeffrey Kohn
 Eva Kornreich
 Ron Krassin**
 Millicent Krisak
 John T. Kristy; VMD
 Beth Krueger**
 Kate and Jared Kunkel
 Dana and Jerry Kuyper
 William Labich
 Susan Lachs**
 Mr. William F. Lacy
 Warren and Lisa Lagerloef
 Ms. Alice M. Lamberson
 Ronald Landis
 Edward Laska
 Judith Lee
 Emily Lehrman and Adam**
 Rosen
 Henry and Deborah Lemien
 Kathryn Lemmon
 Bruce and Abby LePage

Kevin Lewis
Zorba and Kristi Lieberman
Steven Lindeberg
John Lippoth**
Stephanie Lofaro-Gerlach
Sal and Martha Lucci
Elizabeth and Andrew Lustbader
Marc Luxemburg
Kevin Mabley
Thomas and Linda MacGregor
Mr. and Mrs. Robert MacQuarrie
Christine Mahoney**
Ed and Julia Mally
Barbara Manicatide
Lucia H. and James Marion
William Marshall
Samuel and Heike Martin
Jeremy Masters
Mr. and Mrs. George Masumian
Brian Mayer**
Mary McCutcheon
Matthew McGlynn
Roy and Carol McKay
Regina and John Mello
Glenn and Lenore Meltze**
Debbie and Evan Merberg
John Meyer
Lois Miller
Mr. Russ Miller
Mr. William M. Miller
Ann Munnelly
Jeremy Nance
Nasdaq Employee Giving
Kristan and Lloyd Nash
Native- A Plant Nursery
Pat Naylor and John Cottrell**
H.Q. Nguyen**
Claudia and Peter Nielsen
Jeremy, Kristin and Ben Nierman
Mimi and David Nulf**
Elaine O' Keefe and Mark Bisson
John O'Malley**
Fran and Ed O'Neill
A. Michael Pappalardo
Jum and Zeenith Park**
Barbara Parker**
Greg Pategas
Glenn Payne
Mrs. Lawrence Pearson
Sallie and Nicholas Pecora-Saipe
Peter's Spirit Shop
Peter Petron

Tyler Philpott
Ben Pianka
Laurie Israel and Daniel Pitchenik
Lynn and John Pokorny
Maya Porrino**
Dr. Joan Poster
Dean Powers
Jonathan Prager
Jane Albano Purcell
Terrence and Kristin Purcell**
Evelyn and David Quigley**
Catherine Quindazzi
Marie Radcliff
Beth and Jay Rand
Kathleen Rauscher**
Ray and Carolyn Rauth
Mr. Douglas M. Reid
Janet Reynolds
Mrs. Beth Rhame and Mr. Christopher I. Wright**
Dr. and Mrs. Harvey Riback
Joan and Tom Richardson
Diana Ringelheim
Alison Rivard
Sachi Rochlin
Christal Rodenhiser and Yogesh Sadarangi
Sandra Rosenberg
Robin Rosic
Helena Franklin Rozier**
Mr. and Mrs. Willam Rueckert
Kevin and Pamela Rugg
Michael Russnok
Elaine Rust
Hank and Cheryl Saipe
Pierre and Cathryn Saldinger
Craig and Kelly Saltzgeber
Daniel Satlow and Sara** Nuland
David Saussy**
Susan Schaller
Susan Schneier and David Rosenberg
Morton Schomer
Dave and Tricia Schuldt
Maria Sciaudone
Chris Scully**
Andrew and Cathryn Sebor
Charles Shaeffer
Brian Sharlach
Joy Shaw
Russell Shay
Kim Sherwood**
Anat Shiloach**
Matthew Siegel
Rosalind Siegel

John Sikorski**
Bora and Cynthia Sila**
Joel Simon
Paul and Judith Simon
Robert Skerritt
David and Marcie Slepian**
Robert Snider
Kristian Snook
John Stashinsky
Phil Stasulli**
Mr. and Mrs. Charles Stebbins
Lyla Steenbergen
Ira Stein
Mr. Stephen Steinbrecher
Kent Steinnagel**
Anne Stephan**
Derek and Sara Sterling
Jean Stetz-Puchalski
Mr. Robert M. Stilson
Robert S. Strauss
Joseph G. Strolin; Jr.
Julian Stroud
Karin and Jim Sugerman
Katherine Sullivan**
Ellie Susmeyer
Robert and Anne Svensk
Winnie Swarr
Mr. and Mrs. David P. Sylvestro
Mr. Theodore L. Sullivan and Ms. Faith Taylor
Jane H. Tierney
Alan and Yumi Trapani
Teresa McManus and Brian Truskowski
John and Susan Tschirhart
Andrea Turner and Albert Toth
Carl Urbania
Brian and Cristin Vahey
Mitzi and Edward Vaimberg
Mark Vallerie
Ursula Van Arnam
Ms. Florence Vannoni**
Chris Vatis**
Barbara Vogel
Wagenbach Family
Will and Maybette Waldron
Catherine Walsh
Dava Waltzman**
Sheila Ward
Jeffrey Warren
Christine Wasyliko and Christopher Huntley
Amy Watson
Mr. Laurent and Wendy Weaver Chaix
Alec Webb
Heidi Webb

Matthew Weiss
Richard Welter
Richard Werner**
Mrs. Frances S. White
Cynthia A. Williams
Rhonda Williams
Carolyn and James Wilson
Steve Wisdom
Wiktor Wozniak
Corey Wrinn**
Melanie Wyler
Susan Zaveruha
Richard and Margaret Zeldes**
William and Amy Zima**
Mr. and Mrs. Richard A. Zucker

Naturalist \$250-499

Sarah Adair
Pippa Bell Ader and David Ader
Elenee Argentinis
Ms. Margie Golden and Mr. Russell Baris
Amy and Aaron Bowman
John and Kristin Burbank
David Ellis
Fairfield Garden Club
Roma Fanton
Stuart and Donna Farber
Debrah Farentio**
Paul Farrell and Paula Cleary
Rita Appel and Jonathan D. Fraade
Luisa Francoeur
Michael and Haley Friedman
Peter Gaboriault and Family
Mr. Nathaniel W. Gibbons
Prashanti Gogineni and Ramachandran Cherukuri
William Gray and Diana Romney Gray
Greens Farms Garden Club
Eva and Jim Grundy
AJ and Susan Hand
Jeff and Miriam Hauser
David Hertan and Claire Hurley
Jonah Hotchkiss
Taylor Hoyt
David and Christine Juneau
Greg Kesler
Jack and Janet Kruse
William J. Kupinse Jr.**
Norman and Celeste LaCroix
Mr. and Mrs. Carl Leaman
Christopher Lewis
Alison and Sean Martin

Crazer Martin
 Janice and Robert Martinez
 Ian Marucci
 Bob Marzik and Alice Caldwell
 Blair McCaw
 Ms. Mary Lou McGuire
 Grant Orelup
 Leonard and Caroline Peterson
 W. Fergus and Davina E Porter
 Carol Quinn and David Mayo
 Andrew Rosenberg
 Sasqua Garden Club
 The Schettino Family**
 Art and Jayne Schoeller
 The Scioscia Family
 Eiko and Gary SeEVERS
 Mrs. Margery S. Silk
 Steven Skoler and Sandra Horback
 Chris and Sara Spaulding
 Dr. and Mrs. Joseph F. Sproviero
 Vasanth and Ramesh Subramanian
 Megan Svensen
 Elizabeth and Jonathan Swallen**
 Martel Rynderman and Robert Teltser
 Mr. and Mrs. David Thompson
 Scott and Michelle Mantello Thompson
 Ryan Tucker and Kyaiera Mistretta
 Michael Tunstall
 Wesley B. Tyler
 Linda Vaughan
 Frederick Walters
 Landon and Alicia Westerlund
 Westport Garden Club
 Alice Cooke and Steve White
 Claire Wilkes
 Brian Williams
 Craig and Stephanie Willis

Trailblazer \$500-999

William and Julia Bassett
 Kenneth and Alice Mulligan**
 Bernhard
 Misty Beyer
 Douglas and Pat Bilinski
 Jason and Kimberly Brenner
 Natalie Burtson
 Peter and Leslie Cawley
 Linda and Cyrus Chess. MD
 Louis and Maria Dempsey
 Aili diBonaventura

Robert and Ruth Diefenbach
 Anthony Eason
 Matthew Finkle and Grace Cho**
 Nikola and Todd Freeman
 Mr. Michael Wiseman and Ms. Helen Garten
 The GE Foundation
 Linda A. Giers
 Marcy and John Golden
 Gardner Grant
 Greiser's Coffee and Market
 Mr. and Mrs. Michael A. and Judith D. Guthman
 Mary Ellen Guzewicz
 Lisa Hersch
 Rebecca Hoefler and David Dunlop
 Mr. and Mrs. Richard M. Hoyt
 Carol and Val Kratzman
 William M. Kutik
 Daniel Leavy
 Charles MacCormack and Susan Ross
 Brian and Florence Mahony
 Wesley and Lauren Soloff
 Malowitz
 James McGrath, Jr
 Candace Meader
 Mona Pine Monroe
 Ross and Ande Ogden
 Yulman Foundation, Judith and Brad Oren
 Diane Parrish
 Chris Petherick and Sue Shunta
 Jennifer and Philip Platek
 Kristen and Justin Plock
 Pamela W. Ritter
 Bill Humphrey and Nancy Saipe
 Lisa Palladino and Joseph Schnierlein
 Jay Sherwood
 Jeff and Elizabeth Silverman
 David and Christine Slump
 Betty Smith
 Jim Smith
 Mr. and Mrs. Steve R. Smith
 Zandy Smith
 Mr. Thomas R. Talamini
 Mr. and Mrs. Patrick Toole
 Christian and Eva Trefz
 Colin Walklet and Heather Williams
 Maria and Ivan Watson
 Wild Birds Unlimited of Fairfield

Armand Wolff and Cynthia Murdock
 Richard Wright
 The Shack Sackler Foundation

Stewards \$1,000 - 2,499

Robert and Gail Bedoukian
 Laszlo and Jill Biringi, Jr.
 Ms. Patti Brasfield
 Felix Charney
 Dr. Mark Hotchkiss Ms. Marcia Cohen
 Peter Diefenbach
 Van and Wendy Dusenbury
 Mr. and Mrs. Robert J. Eck
 Andrew Frankel
 Mr. and Mrs. Alfred Fressola
 Jonathan and Leigh Gage
 Alan and Judy Goldbecker
 Walter and Betsy Greene
 The Stewart and Constance Greenfield Foundation
 Claudia and Rob Hahn
 Victoria Hornbostel
 Ted and Selina Huber
 Donald and Wendy Hyman
 Meagan and Dan Johnson
 Chris and Andrea Kerin
 Steve and Yvette Kohn
 Marta Jo Lawrence
 Nancy Lawton
 James and Amy Leahy
 Michal Locker
 Mitzi Lyman and David Geronemus
 Pete Muller
 Alphonse and Judith Noe
 Mary Pajonas
 Mr. and Mrs. Samuel J. Palmisano
 Tracy Pennoyer and John Auchincloss
 Mr. and Mrs. Richard Ritzel Jr.
 Mr. and Mrs. William Sherlock Jr.**
 Mr. and Mrs. Mark R. Slane
 Mr. and Mrs. Jonathan Sonneborn**
 Mr. and Mrs. Michael Sovern
 Darcy Stacom and Chris Kraus
 Susan and Timothy Steele
 Judy Sterling
 Chris Thomas
 Emily Hall Tremaine Foundation
 Jan Unger
 James and Stephanie Veghte

Heidi Von Hoffman
 Mrs. Rosemary Weaver
 Lawrence and Mary-Lou Weisman
 Chan and Leslie Wheeler
 Robert and Suzanne Wright
 Douglas and Helmi Zarookian

Steward \$2,500-4,999

Celia and Fred Campbell-Mohn
 Environmental Quality Improvement Grant - USDA
 Paul and Ellen Greenberg
 Kevin and Sally MacGuire
 Robert and Cindy McHugh
 S. Antoinette Morton-Dimes
 Irwin and Dorothy Nessel Foundation
 The Grace Jones Richardson Trust
 Grace K. Salmon Trust

Stewards \$5,000-9,999

Alan and Betty Feldman
 Amy and Steve Harlacker
 Raphael and Robbie Hodgson
 Robert and Bonnie Kreidler
 Jacqueline Littlejohn
 Jessie B. Cox Charitable Trust
 The William T. Morris Foundation
 Whole Foods Market

Stewards \$10,000 & above

The Estate of Mr. Howard Aibel
 William C. Bullitt Foundation, Inc.
 Andrew Knuth
 William and Eileen Kraekel
 Newman's Own Foundation
 Recommended by Lissy Newman*
 Newman's Own Foundation
 Recommended by Kurt Soderlund*
 Newman's Own Foundation
 Recommended by Joanne Woodward Newman*
 Mr. and Mrs. John P. Richardson, Jr.
 Shelter Hill Foundation, Paul and Elizabeth Shiverick
 David and Landon Storrs

Blueberry Bush Sponsors (86)
 **next to names.

In Memory Gifts

IN MEMORY OF HOWARD J. AIBEL

Jonathan Aibel

IN MEMORY OF BOB BEALLOR

Stuart and Susan Beallor Snyder

IN MEMORY OF ROBERT CATE

Coal Cate

IN MEMORY OF WILLIAM CROWTHER

Ellen Landowne
Timothy Keating
Wendy Crowther
Bob Derby and Elizabeth Bradley
Richard and Elizabeth Solazzo
Ms. Harriet Heineman
Phyllis and Michael Turin
Elizabeth Bradley and Robert Derby
Phyllis and Michael Turin

IN MEMORY OF EMILY DUVOISIN

Jacqueline Duvoisin

IN MEMORY OF ANNE DUSENBURY

Fabian Family

IN MEMORY OF MELISSA GAGE

Leigh and Jonathan Gage

IN MEMORY OF COREY HAUSMAN

Brian Williams
Taylor Hoyt
Joel Hausman
Mr. and Mrs. Richard M. Hoyt

IN MEMORY OF LINDA LUXEMBURG

Marc Luxemburg

IN MEMORY OF JOHN MUIR

Bruce Nichols

IN MEMORY OF THOMAS "TOM" PETERSON

Kirby Brendsel

IN MEMORY OF BEN PIANKA

Ben Pianka

IN MEMORY OF HAROLD SCHER

Thomas and Joan Richardson

IN MEMORY OF GEORGE TRAINER SCHULTZ

George Schulz

IN MEMORY OF DANIEL SOBIN

Kathleen Rauscher

IN MEMORY OF KEITH STOKES

Marcia and Dennis Hamelin
Irene Karazin

IN MEMORY OF GEORGE STERLING

Judy Sterling
Karen Jacobs
Anthony Eason

IN MEMORY OF DEREK RICHARDSON

Zandy Smith
In Honor Gifts

IN HONOR OF DAVID BRANT

Serge Boyce - Thank you David for all you and Aspetuck Land Trust do for the good of us all.

IN HONOR OF ANN AND TED CARTER

Misty Beyer

IN HONOR OF GOWEN DACEY

Beverlee Dacey

IN HONOR OF PETER DIEFENBACH

Robert and Ruth Diefenbach

IN HONOR OF DORRIS ENO

Kathleen Brletic

IN HONOR OF DELILAH IRENE FAIRCLOUGH-STEWART

Robyn and Marty Fairclough-Levine

IN HONOR OF ALAN FELDMAN

Ira Stein

IN HONOR OF BETSY GREENE

HTG Investment

IN HONOR OF GREISER'S COFFEE & MARKET

Adrienne Burke & Jeff Foster

IN HONOR OF ROY AND ELEANOR GOSSE

Robert and Lois Gosse

IN HONOR OF JONAH HOTCHKISS

Joel Simon
Paul and Judith Simon

IN HONOR OF BILL HUMPHREY AND NANCY SAIPE

Sallie and Nicholas Pecora-Saipe
Lynn Humphrey
Hank and Cheryl Saipe
James and Claudia Humphrey

IN HONOR OF DON HYMAN

Mark and Barbara Edinberg -
In Don we trust.

IN HONOR OF EMILY LAUX

Lee De Monico

IN HONOR OF MELISSA NEWMAN

Judith Lee

IN HONOR OF NANCY MOON

Steve Gordon

IN HONOR OF GRANT PATRICK

Morgan Patrick

IN HONOR OF ELLIS PYLE

Nelson Johnson

IN HONOR OF ANNABELLE PRAGER

Jonathan Prager

IN HONOR OF RICHARD RITZEL

Zandy Smith

IN HONOR OF ROBERT L. SNIDER, SR.

Robert Snider

IN HONOR OF MARTHA STRANGE

Michael Strange

IN HONOR OF CHARLES AND MARIA WATSON

Ivan Watson

WESTON -WILTON FOREST BLOCK FUND

Connecticut Wetland In Lieu Fee Program authorized by the US Army Corps of Engineers - New England District, and sponsored by the National Audubon Society
Jessie B. Cox Charitable Trust
Jenny Goodwyn
Donald and Wendy Hyman
Jacqueline Littlejohn
Samuel and Heike Martin
Julia Uris
Carol Anne Valentine
Janet H. Williams

NEWMAN-POSES PRESERVE IMPROVEMENT FUND

Kathleen Brletic
Robert and Judith Brown
Peter and Susan Eastman
David Ellis
Luisa Francoeur
The Stewart and Constance Greenfield Foundation
Eva and Jim Grundy
Ms. Harriet Heineman
Warren and Lisa Lagerloef
Ms. Alice M. Lamberson
Sal and Martha Lucci
Jay Petrow
W. Fergus and Davina E Porter
Steve and Erica Scioscia
Andrew and Cathryn Sebor
Jim Smith

We apologize if we inadvertently misspelled or omitted your name, and hope that you will reach out to us so that we may correct your records.



Aspetuck Land Trust
P.O. Box 444
Westport, CT 06881

Established 1966

aspetucklandtrust.org



Become a Member of Aspetuck Land Trust

Your tax-deductible donation is vital and makes an impact on our towns. Please use the enclosed envelope to send your gift of support to Aspetuck Land Trust or visit our secure website at aspetucklandtrust.org to donate by credit card.

Connect

Become a Fan of Aspetuck Land Trust on Facebook. It's a great way to stay up to date on our latest happenings. Sign up on our website to receive our e-newsletter. Follow us on Instagram.



Printed using recycled
paper stock