

An impressionistic painting of a forest stream. The scene is dominated by warm, golden-brown and yellow tones, suggesting sunlight filtering through the trees. The water is rendered with vibrant, textured brushstrokes in shades of blue, green, and white, reflecting the surrounding foliage and sky. The overall style is soft and painterly, capturing the light and atmosphere of a natural setting.

Aspetuck

Land Trust

2021 Annual Report

- Annual Meeting:
Pequot Library
- Green Corridor
Capital Campaign
- Land saved
- Monroe joins ALT
towns
- Our thanks to you!

Dear Aspetuck Land Trust Member,

As the pandemic begins to recede, I am amazed at the changes it has generated!

- Many people's health consciousness has improved—you told us that our properties provided needed refuge and respite during the pandemic—and Aspetuck Land Trust (ALT) open spaces helped get us in better physical and mental shape when we needed it most.
- Our connection with nature has deepened and become more important to many of us. Open space showed its value to all.

There is no denying that the pandemic caused suffering for many, but the world has shown resilience and has entered 2022 stronger and more adaptable. And that's true for Aspetuck Land Trust. Here's what we've accomplished, thanks to you, our generous members!

Green Corridor Land Preservation

- Purchased the 34-acre Gilbertie's Farm in Easton, our first operating farm.
- Combined with the Monroe Land Trust to broaden our reach in Fairfield County.
- Completed the purchase of the 85-acre Fromson Strassler property in Weston, a keystone to expanding our Weston-Wilton Forest Reserve—now named for Daniel E. Offutt, whose charitable trust made a major contribution.
- Purchased the 10-acre Montanaro property, the last property in our Honey Hill Preserve facing residential development—now named the Bill Kutik Honey Hill Preserve to recognize major funding from Board Member Bill Kutik.
- Won our four-year campaign on May 3 when Easton voters agreed, 1057 to 574, to sell us 18.7 acres of South Park land to preserve forever, including the banks of the Mill River, a wild trout stream bordering our Warner Angler's Preserve.



Aspetuck Land Trust President Bill Kraekel.

Green Corridor Homeowner Engagement

- Continued to educate you and the public about the benefits of planting natives, rethinking lawns, and reducing pesticides and herbicide use.
- More than 870 homeowners have taken the Green Corridor Pledge to build biodiversity in their yards,
- Held 10 virtual learning lecture events,
- Organized two native plant sales at the Caryl and Edna Haskins preserve grossing more than \$80,000.
- Developed two native plant demonstration landscapes at our Southport Wildflower Preserve and at the Haskins Preserve—to educate the public how they can use natives in their own yards.

Green Corridor Funding

Finally, we want to recognize your generosity supporting our annual fund and your contributions to our recent Capital Campaign that raised \$5.1 million toward funding our Green Corridor land acquisition efforts and homeowner engagement.

The outpouring of financial support despite the pandemic has been amazing and gratifying. The Capital Campaign lays the foundation for our next steps in our Green Corridor Vision and the new and broader 2030 Vision for Aspetuck Land Trust that will frame our future efforts. We intend to build on the enthusiasm and resiliency we have demonstrated in the last two years to build a healthier, greener, and more sustainable world.

We are grateful to our board and staff for their hard work and boundless enthusiasm. And to you, our generous and loyal members who make us who we are!

My best to all of you,



Bill Kraekel

President, Aspetuck Land Trust

Board Members

President

Bill Kraekel

VP Finance

Robert W. McHugh

VP Land Acquisition

Ross Ogden

VP Land Management

Joe Schnierlein

VP of Nominating and Governance

Amy Harlacker

Secretary

Ellen Greenberg

Staff

Executive Director

David Brant

Land Stewardship Director

Director Lou Bacchiocchi

Development Director

Kim Craig

Conservation Outreach Manager

Reggy St. Fortcolin

Land Protection Specialist

Adam Goodman

Landowner Engagement Director

Mary Ellen Lemay

Data and Communication Manager

Shaina Meyer

Trout Brook Valley Ranger

Jim Wood

EASTON

Bill Kraekel
Bonnie Kreidler
Ross Ogden
Peter Petron

FAIRFIELD

Joel Green
Amy Harlacker
Dave Nulf

WESTON

Saul Cardenas
Thomas Failla, Ph.D.
Tracy Pennoyer
Michael Tunstall

WESTPORT

Ellen Greenberg
Walter Greene
Bill Kutik
Peter Cawley

AT-LARGE DIRECTORS

Michelle Fracasso
Robert W. McHugh
Donna Merrill
Joseph Schnierlein
Barbara Thomas

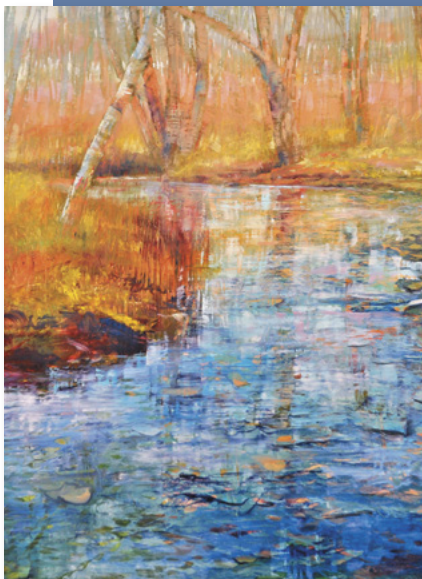


Aspetuck Land Trust
P.O. Box 444
Westport, CT 06881

Established 1966

aspetucklandtrust.org

203-331-1906



About the Cover

Early Spring, oil on laminated aluminum, Stonebridge Waterfowl Preserve, Weston. Painted by ALT member David Dunlop.

Aspetuck Land Trust's 56th Annual Meeting

Thursday, June 16, 7:00-8:30 pm
Pequot Library

Business meeting and lecture followed by food and drinks on the lawn at 8:30 pm



Featured Speaker:

Gerald Torres

Director, Yale University Center
for Environmental Justice

**"21st Century Conservation Issues:
A Reckoning with Public Access to
Open Space."**

Around the country, there are organizations like Aspetuck Land Trust striving to preserve the beauty and ecological health of open space for the benefit of all. But are we succeeding for everyone? Do all people in our community have the ability to enjoy our preserves and have access to land? Are we missing an opportunity to enhance and extend the Green Corridor and engage with our neighboring communities?

Professor Torres will help us try to answer these difficult questions and we'll discuss how Aspetuck Land Trust is addressing these important issues.

Annual meeting RSVP:

www.aspetucklandtrust.org/events
or email RSVP@aspctucklandtrust.org

Green Corridor

In 2020, we launched the Green Corridor Capital Campaign to finance our efforts to create a healthier community that better connects and engages all people and safeguards our land, wildlife and water resources for generations to come. By the end of 2021 we had raised \$5.1 million. During this fundraising campaign, we recognized how much this simple message resonated with so many people living in and around our region. Creating a 40,000-acre Green Corridor through multiple towns was a concept whose time had come. Because of the success of the fundraising campaign, we have begun to build the corridor that will protect, connect, and improve the ecological health of our region for all people and wildlife.

The Green Corridor became a strong rallying cry for everyone who is concerned about protecting resources for future generations. It makes the work we do as a land trust accessible to everyone in a way that hadn't previously been considered. Yet Aspetuck Land Trust has just scratched the surface of the potential of the Green Corridor.

Green Corridors:

- ✓ can be created in everyone's back yard, on scales both small and large.
- ✓ can be created in urban settings
- ✓ can be built in cooperation with other nonprofits and land trusts
- ✓ will look different in different communities
- ✓ have the power to unite people.

Brian Russell, Red Shoe Film photo

Capital Campaign

Green Corridor Capital Campaign

Our Generous Donors (As of December 31, 2021)

Daniel E. Offutt, III Charitable Trust
Connecticut Department of Energy
and Environmental Protection
Christine Knuth
Bill Kutik

Bill and Eileen Kraekel
Marc and Cathy Lasry
Dan Levinson

Christina and Woodson Duncan
Ted and Selina Huber
Estate of Pamela W. Ritter
Paul and Betsy Shiverick
Cleo and Jonathan Sonneborn
Darcy Stacom and Chris Kraus *
Ann and Charlie Stebbins
Anonymous

Melissa and Geoffrey Bradshaw-Mack
CT Fee in Lieu Program, Audubon CT
Andy and Nancy Frankel
Ellen and Paul Greenberg
Amy and Steve Harlacker
Bonnie and Robert Kreidler
Kevin and Sally MacGuire
Sasa Mahr-Batuz
McHugh Family
The Muller Family

Kurt and Clea Soderlund *
Landon T. Storrs in memory of
David K. Storrs
Christian and Eva Trefz
William C. Bullitt Foundation
Leslie and Peter Cawley
Luisa Francoeur
Walter and Betsy Greene
Alison James and Jim Reesman
Jacquie Littlejohn
Charles MacCormack
Debra and Ed Mahony
Toni Morton-Dimes
Melissa Newman and Raphael Elkind
Tracy Pennoyer and John Auchincloss
Anonymous

Melissa and John Ceriale
Family Foundation
Jim Donaghy
Van and Wendy
Dusenbury
Alan and Betty Feldman
R. Hahn Foundation
Anonymous
Misty Beyer
Deborah Harper Bono
and Girome Bono

Dr. Mark Hotchkiss and Ms. Marcia
Cohen
Jonathan and Leigh Gage
Prashanti Gogineni and Ramachandran
Cherukuri
Chris and Andrea Kerin
Pete Petron and Emily Kerns
Lisa Hersch and Jonathan M. Siner
Michelle Fracasso and Jonathan Spitzer
Lea and Dave Sylvestro
Michael Tunstall and Katherine Hauser
Jeff and Lori Galdenzi
Ross and Ande Ogden
Heather Williams and Colin Walklet

These generous donors gave \$2,500 or more.
* Building Bridges/Vision 2030

The Green Corridor

Aspetuck Land Trust's Green Corridor circling through Westport, Wilton, Weston, Redding, Easton, and Fairfield will protect, connect and improve the ecological health of our region for all people and other living things.

Protecting Land and Water in the Green Corridor

Founded in 1966, Aspetuck Land Trust is one of the state's largest land trust's. As a guardian of our natural lands ALT has permanently protected over 2,000 acres. Through the Green Corridor Initiative ALT is preserving the last remaining undeveloped lands in our towns and engaging thousands of homeowners—who are the connective tissue between our

protected open spaces—to build more biodiversity in the landscape. Conserving land is our core mission but the scarcity of land and lack of biodiversity in our suburban environment means we have to find creative ways to leverage and magnify our conservation impact. This is why we are involving homeowners in our conservation efforts.

Land Protected in 2021

Fromson Strassler Purchase—85 Acres—Weston

Aspetuck Land Trust purchased this property from the town of Weston for \$1,144,000. This was once in a generation opportunity to preserve a property of this size, by Fairfield County standards. The project took three years to complete and was partially funded by a \$625,000 grant

from the CT Department of Energy and Environmental Protection, with private support from the estate of Daniel E. Offutt whom the property will be named for. The property was a key acquisition on the Weston-Wilton border where Aspetuck Land Trust is assembling a 705-acre protected forest reserve.

Forest blocks larger than 500 acres have higher successful breeding rates of forest interior bird populations and are important for other larger vertebrates. Extensive riverine and wetland habitat support the West Branch of the Saugatuck River and freshwater drinking water aquifers and support a variety of threatened species like the Eastern Box Turtle. The property will be open to the public for hiking in Fall 2022. We want to thank the Town of Weston for their partnership and Weston voters for ultimately voting for the sale of the land to Aspetuck Land Trust.

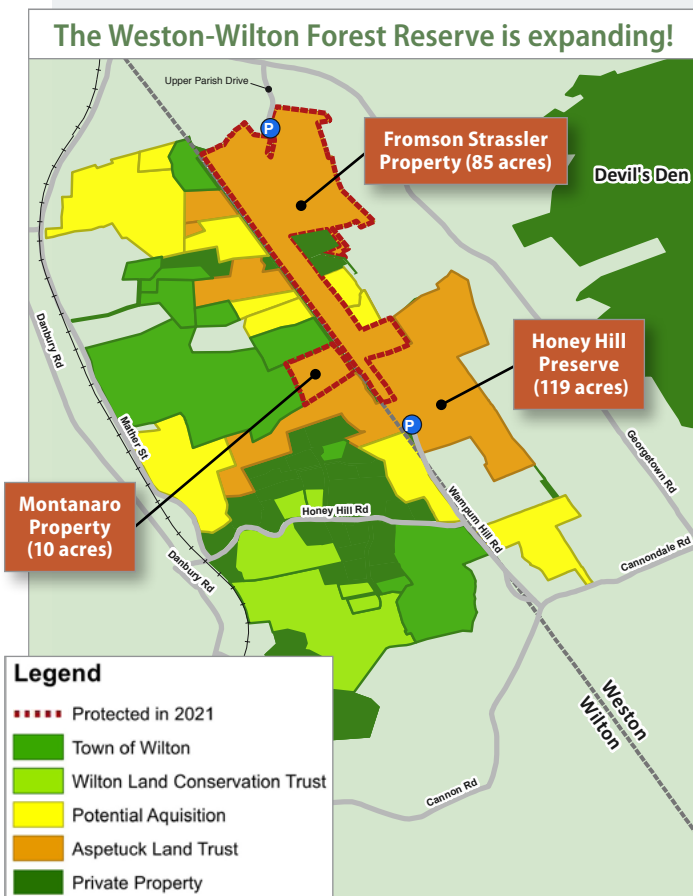
Montanaro Purchase—10 Acres—Wilton

A private property in the middle of the Weston-Wilton Forest Reserve, the Montanaro property was purchased from a developer who received approval to build two homes and a two-thousand foot driveway through ALT's Honey Hill Nature Preserve. We've been working for 12 years to conserve this property and its protection ensures the preservation of the last developable parcel inside the Forest Reserve. The property expands our Honey Hill Preserve and will be renamed the Bill Kutik Honey Hill Preserve to recognize major funding from ALT Board Member Bill Kutik.

Your ongoing support helps to protect more land.

Other projects we're working on:

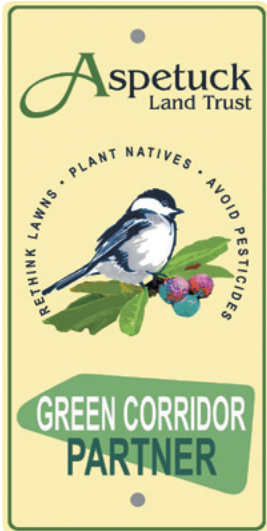
54 acres in the Weston-Wilton Forest Reserve	8 acres in Monroe (access from Willenbarb Rd.)	11 acres in Easton (South Park property)
--	--	--



The Weston-Wilton Forest Reserve, a major effort by Aspetuck Land Trust to protect a 705-acre forest on the Weston-Wilton border. Forest blocks larger than 500 acres have higher successful breeding rates of forest interior bird populations and are important for other larger vertebrates.

Become a Green Corridor Partner

More than 870 homeowners have taken the Green Corridor Pledge to become Green Corridor Partners. These homeowners—who are landowners—are making a difference by



- ✓ planting native plants,
- ✓ rethinking their lawn, and
- ✓ avoiding pesticides.

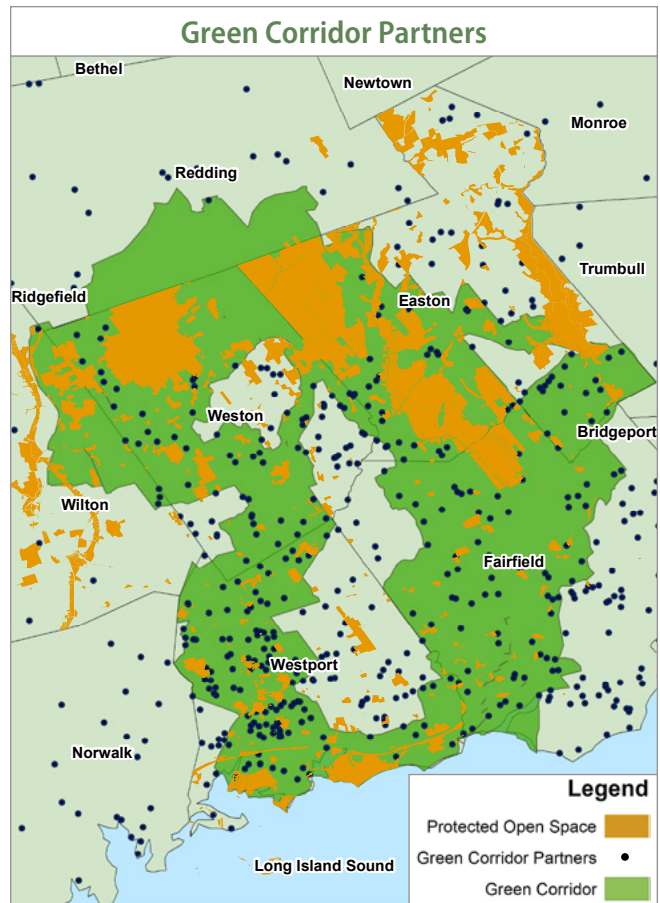
Homeowners are the connective tissue between our protected open spaces and how they take care of their yards can make a big difference.

From Connecticut's Abbot's Sphinx Moth to the Zebra Jumper Spider we are all part of a complex food web. We are all connected and many small actions add up to big impact. As-

petuck Land Trust members are on the cutting edge of this revolutionary change.

We are calling all ALT members to help us reach our goal of 1,500 Green Corridor Partners by the end of 2022.

Become a Green Corridor Partner and we'll send you this beautiful sign to display in your yard. Visit www.aspetuck-landtrust.org/green-corridor-partners-map



Each dot represents a homeowner who has taken the Green Corridor Pledge to: plant native plants, re-think their lawn, and avoid pesticides, all part of our efforts to create more biodiversity in the landscape.

A Green Corridor Partner Report

Dear Aspetuck Land Trust,

We purchased some Swamp Milkweed plants at ALT's native plant sale last spring. I wasn't sure if they would grow where planted because of low sunlight. However, four grew to flower and I observed several Monarchs visiting blossoms on one of the plants. Very exciting. A few weeks later I went out to check the plants and saw four beautiful Monarch caterpillars on the same plant and they were eating the leaves. I only saw four caterpillars, but that's four more than would have been had we not planted those milkweeds. This is evidence that the natural lawns and green corridor ideas work. It was really a nice experience. We are looking forward to the next native plant sale and hoping to do a bit more in our yard.

— Ralph Adams, ALT Member and Green Corridor Partner, Westport



Monarch caterpillars flourish on newly-planted native Swamp Milkweed plants planted in a Green Corridor yard.

Leave a Legacy

Protect the places you love by making a gift to the Aspetuck Land Trust in your estate plans. By naming Aspetuck Land Trust as a beneficiary of your will, living trust, or retirement account, you can make a visionary gift that will conserve land for generations to come.

Individuals who have made a planned gift, and have let us know, will be recognized on a permanent “Legacy of Open Space” monument in the 1,009-acre Trout Brook Valley Preserve orchard.

Since the Legacy Society was launched a number of ALT members have come forward to join the Society. These generous gifts help save land for future generations.

For more information

contact Kim Craig at 203-331-1906 or kcraig@aspetucklandtrust.org, or visit aspetucklandtrust.org/planned-giving



Former ALT Board Member Tom Johnson helps a youngster plant a blueberry bush in the blueberry patch in Trout Brook Valley which is enjoyed by many.

“My family and I got so much joy and serenity from so many Aspetuck Land Trust preserves over the years. A legacy gift is a way to give back.”

—ALT member Don Hyman

Town of Monroe

Now Part of Aspetuck Land Trust

Aspetuck Land Trust announced a merger with the Monroe Land Trust and Tree Conservancy (MLT) effective July 1, 2021. With the merger, ALT extends its land conservation work from its original four town focus (Easton, Weston, Fairfield and Westport) to five towns.

“The Aspetuck Land Trust has always had a regional view of conservation,” said Bill Kraekel, ALT’s President. “Monroe is a natural extension of our mission and programs. Our Green Corridor initiative takes a holistic view of the landscape that goes beyond town boundaries. That is why we are so excited to have MLT and the town of Monroe join our land trust. We believe that this merger enables us to protect more of the

open spaces in our region that are so important to us and future generations,” Kraekel said.

“This is a model and an inspiration for other land trusts across the state,” said Amy Blaymore Paterson, Executive Director of the Connecticut Land Conservation Council, a group that advocates for land trusts throughout the state. “We are grateful to the Peter and Carmen Lucia Buck Foundation for underwriting this merger, which will benefit land conservation in Southwest Connecticut for generations to come and we applaud the leadership and foresight of Monroe Land Trust in seeking this merger.”



Above: Former Monroe Land Trust leaders at the Karl Witalis Preserve. The 14.6 acre property is located at 210 Hattertown Road. From left: Wally and Barbara Thomas and Aaron McGoldrick. At right: Aspetuck Land Trust’s new five-town focus in green overlaid with the Green Corridor in black.

Bob Kreitler Invasives Volunteer Leader

By Sherri Daley

Are there more ticks in your garden these days? Bob Kreitler knows invasive species are their friends.

A Japanese barberry bush can grow up to four feet tall. It's a formidable plant: the tips of its stems are needle sharp. Cut back, it vigorously re-sprouts, its drooping branches root, and birds carry its berries for miles to replant. It's invasive and cruel to meadows and forests filled with native greenery and blossoms. State foresters tell us there's a ten-fold increase in ticks when barberry is present.

This got Bob Kreitler's attention and he's doing something about it.

Bob is leading a major effort, to remove invasive plants on the more than 2,000 acres of properties that the Land Trust owns. It's a bold assignment since volunteers have to be schooled on how to recognize invasive species, they need to be careful not to trample fragile native plants, and the work fastidiously avoids over-use of herbicides.

Bob comes to this project passionately overqualified. Although he did attend the Yale School of Forestry, that was a long time ago. In the meantime, he worked for the U.S. Forest Service and in the White House's Office of Management and Budget on National Resources; created Kreitler Financial, a wealth management firm his son Charles now oversees; and dedicates hours and hours to education reform in New Haven.

Hard to believe he has time to tramp through the tall grasses looking for winged eunonymous, Japanese barberry, and other invasive species.

But he does. Both Bob and his wife Bonnie, who is a member of the ALT Board, feel a strong connection to the earth's plants and trees, birds, insects, and animals. Their Easton home



Bob and Bonnie Kreitler are local conservationists who support the work of Aspetuck Land Trust.

has busy and productive beehive boxes near the garage, a horse-back riding trail, and a native wild-flower meadow that they created.

Working shoulder to shoulder with Bob in the invasive species removal project are ALT's own Lou Bacchiocchi, Land Stewardship Director; Joan Byrne, Volunteer Coordinator; and Joe Schnierlein, Board Member and VP of Land Stewardship; along with a tireless task force of volunteers.

"The project has been around for a while," Lou said, "but Bob lit the fire. He brought the energy and direction to the work that was desperately needed. He's a great organizer; did things like get us all together at the Olde Bluebird for breakfast, got us energized, and built a team."

The need for invasive species removal has grown exponentially. "The movement is exploding," says Bob. "Plants and insects and sea creatures are brought into the country because of the globalization of trade. Invasive species make it difficult for our diverse native plants and animals to prosper."

Especially since the pandemic, more and more people are taking advantage of the Land Trust properties. "People want to get outdoors." Then he adds. "We're making great progress, but clearing out invasives is just the start. Then there's Phase 2. We'll need to plant new native plants."

Bob is proud of the work the team has done. "It's more important now than ever," he says. He looks out over his own land, which is lush and thriving. "We would love to have more volunteers. They just need to go to the Aspetuck website and sign up. We all need to do good stuff in a challenging world."

Bob, for one, is indeed "doing good stuff."

To get involved with Bob on the invasive team visit aspetucklandtrust.org/volunteer

2021 | ALT Fast Fact State foresters tell us there's a ten-fold increase in ticks when invasive barberry is present.

On the Trails and In the Woods

ALT's first "DEEP WOODS Art Exhibition" at the Leonard Schine Preserve in Westport was conceived, curated and produced by Rebecca Ross (far right). The June 12th event featured 26 pieces from 19 different artists. In addition, Misty Beyer, from Music for Youth, brought in three talented young classical musicians. They made real magic in the woods and a perfect day.

More than 75 people enjoyed the event as they followed the Family Trail around the woods to see the art hung high in the trees. Paintings, photographs, collages and natural sculptures all dotted the woods, providing the woods a chance to be viewed as art itself.



An inspiring art event at the Leonard Schine Preserve in Westport.



Bart's Tree Service volunteered a day and dropped 60 dead ash trees in Trout Brook Valley. The ashes are being killed by the invasive Emerald Ash Borer. Thanks Bart's!



Westport Staples Service League of Boys (SLOBS) helping out at the Leonard Schine Preserve Natural Playground. The SLOBS did a neat job!



South Park property clean up in Easton.



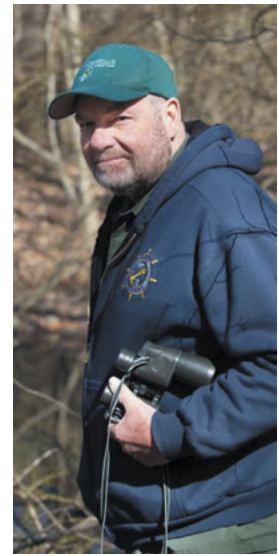
Kim Craig photo

Wilton Pack 22 Tiger Den made these beautiful bluebird boxes for use in Aspetuck Land Trust preserves. Thanks Tigers!

On the Trails and In the Woods *continued*



Aspetuck Land Trust's native plant sale is an increasingly popular venue for ALT members and the public to purchase native plants for their yards to build biodiversity in the landscape. Pictured is ALT Board Member Ellen Greenberg getting plants ready for the sale.



Tracy Pemmyer photo

ALT Ranger Jim Wood.



Karalyn Lamb photo

A baby Great Horned Owl peeking out of the forest.

2021 | ALT Fast Fact

More than 140 Trail Stewards volunteer their time to help monitor and maintain ALT's 45 trailed nature preserves.



ALT Board Member and Fairfield Ludlowe English Teacher Dave Nulf with his students in Trout Brook Valley.



ALT staff repairing the bridge at the Hawley's Brook fish ladder in Trout Brook Valley.

2021 Financial Highlights

MEMBERSHIP CATEGORIES

New Members (Separate from the summary below):	559
Stewards \$1,000+	116
Trailblazers \$500-\$999	105
Naturalists \$100-\$499	698
Individual/Family \$50-99	421
Friends \$1-49	155
Total Individual Members	1,495

REVENUE

Membership	\$ 526,513
Plant Sale (Gross Sales)	81,739
Green Corridor Capital Campaign (Cash and pledges)	2,813,491
Restricted Donations (Other)	114,730
Foundations	84,240
Rent	236,137
Misc. and In-Kind	1,873
Total Income	\$ 3,858,723

EXPENSES

Stewardship of Properties	\$ 271,284
Promotions and Programming	66,824
Operational Expenses and Professional Fees	510,546
Administrative Costs	83,537
Total Expenses	\$ 932,191

NET OF REVENUE AND EXPENSES

\$ 2,926,532

LAND ACQUISITIONS

Fromson Strassler property (Weston)	\$ 1,148,738
Montanaro property (Wilton)	622,785
Property Acquisition Expenses	56,229
Total Land Expenditure	\$ 1,827,752

OPERATING ACCOUNTS

End of Year Cash Balances **\$ 1,049,000**

ENDOWMENT FUNDS

	Main Account	Restricted Account	Land Stewardship Fund	Land Acquisition Fund
Beginning Balance	\$ 1,902,362	\$ 1,534,914	\$ 167,903	\$ 556,951
Donations and Grants	44,183			319,291
Investment Income	238,161	296,385	29,735	
Reallocation	(158,447)			158,447
Land Purchases				(900,000)
End of Year Funds Balance	\$ 2,026,259	\$ 1,831,299	\$ 197,638	\$ 134,689

Note: Revenue and expenses are unaudited.

ALT Members

Stewards \$10,000+

Melissa & Geoffrey Bradshaw-Mack**
 William C. Bullitt Foundation
 Melissa & John Ceriale Family Foundation**
 Mark Conese & Cynthia Fox
 Christina & Woodson Duncan**
 Andy & Nancy Frankel**
 Ellen & Paul Greenberg**
 Walter & Betsy Greene**
 Amy & Steve Harlacker**
 Ted & Selina Huber**
 Christine Knuth**
 Bill & Eileen Kraekel**
 Darcy Stacom & Chris Kraus**
 Bonnie & Robert Kreidler**
 Bill Kutik**
 Marc & Cathy Lasry**
 Nancy Lawton
 Anthony C. Ludwig
 Charles MacCormack**
 Kevin & Sally MacGuire**
 Sasa Mahr-Batuz**
 McHugh Family**
 The Muller Family**
 Newman's Own Foundation
 Daniel E. Offutt, III Charitable Trust**
 Estate of Pamela W. Ritter**
 Tracy Pennoyer & John Auchincloss**
 Paul & Betsy Shiverick
 Clea Newman Soderlund & Kurt Soderlund***
 Cleo & Jonathan Sonneborn**
 Patricia Sovern
 Landon T. Storrs in memory of David K. Storrs**
 Christian & Eva Trefz**
 Anonymous***

Stewards \$5,000-\$9,999

Aquarion Water Company
 Richard Benson II
 Jason Bowles & Carla Vernón
 Melissa Newman & Raphael Elkind**
 Alan & Betty Feldman
 Grace Cho & Matthew Finkle
 Michelle Fracasso & Jonathan Spitzer**
 Luisa Francoeur**
 Judy & Keith Frey
 Jonathan & Leigh Gage**
 Prashanti Gogineni & Ramachandran Cherukuri**

Grace K. Salmon Trust
 Jerome & Myra Greenberg
 Roberta Hodgson
 Dr. Mark Hotchkiss & Ms. Marcia Cohen**
 Howard & Katherine Aibel Foundation
 Andrew & Karen Kupinse
 Jacquie Littlejohn
 Michal Locker
 Debra & Ed Mahony**
 Carolyn Mizerek
 Dr. Joan Poster
 Southport Area Association, Inc.
 Lea & Dave Sylvestro**
 Mrs. Rosemary Weaver

Stewards \$2,500-\$4,999

Kirby & Teri Brendsel**
 Leslie & Peter Cawley
 Tommy & Kim Craig
 Alan & Judy Goldbecker**
 William & Diana Gray
 Stewart & Constance Greenfield*
 Alvin & Hope Hageman
 Irwin & Dorothy Nessel Foundation
 Alison James & Jim Reesman**
 Klem Family Foundation
 Marta Jo Lawrence*
 Laurence Pitteway
 The Shack Sackler Foundation
 Scott & Michelle Thompson**
 Hunter & Sage Tremaine

Stewards \$1,000-\$2,499

A.C. Israel Foundation, Inc
 David Allen
 Pippa Bell & David Ader**
 Benedict Miller Foundation
 Ken & Alice Bernhard**
 Misty Beyer**
 Michael & Edith Blair
 Jason & Kimberly Brenner**
 Letitia & Don Burton**
 John Cappetta
 Don Chaney
 Mrs. Andrea K. Cross
 Ryan Crum
 Maria & Lou Dempsey
 David Dunlop & Rebecca Hoefler
 Van & Wendy Dusenbury**
 Robert Earley
 David Eckles
 George Elsener

Janet Epstein**
 Susan & Peter Evensen
 Bill & Cheryl Everett
 Caroline & Thomas Feroletto
 Fonteyne Family
 Nikola & Todd Freeman
 Al & Cecilia Fressola
 Dave Geronemus & Mitzi Lyman
 Joan Gillman
 Mary Ellen Guzewicz
 Ken Halaby
 Amy Hanson
 Joyce Hergenhan
 Lisa Hersch & Jonathan M. Siner**
 June & Rick Hess
 Paul Horton
 William Humphrey & Nancy Saïpe**
 Susan Ip
 Susan Jacobson & David Moskovitz
 Meagan & Dan Johnson
 Chris & Andrea Kerin**
 Marshall & Johanna Kiev
 The Kleeger Family
 Steve & Yvette Kohn
 Nancy Lefkowitz
 Abby LePage*
 Christopher & Roberta Lewis
 Matthew & Vina Lillvis
 Henry Lord
 Brian & Florence Mahony
 Jonathan Manela
 Christopher & Sarah McDougal
 Kate Melnick
 Alphonse Noe
 Stephen O'Dell
 Ross & Ande Ogden**
 Fran O'Neill
 Joseph Schnierlein & Lisa Palladino**
 Pete Petron & Emily Kerns**
 Elisa Piscitelli
 Ben & Autumn Preskill
 Joshua & Emily Prince
 Rocky Prozano
 Michael Radcliffe & Dena Rayne
 John B. Seel
 Cindy & William Sherlock Jr.
 Jay Sherwood
 Andrew Ziolkowski & Robin Sherwood
 Carolin & Lloyd Sigal
 John & Michelle Sikorski
 Rick & Debi Smilow

Steve & Susan Smith
 Ann & Charlie Stebbins
 Susan & Timothy Steele
 Judy Sterling
 Tom & Emily Todoroff
 Mary Ann & Patrick Toole
 Michael Tunstall & Katherine Hauser**
 Jan & Joan Unger
 Heather Williams & Colin Walklet**
 Wendy Weaver
 Westport Garden Club
 Channing & Leslie Wheeler
 Wild Birds Unlimited of Fairfield
 Richard Wright

Trailblazers \$500-\$999

Dave Ambrose
 Leif Andersen
 David & Gloria Bindelglass
 Laszlo & Jill Birinyi
 Amy & Aaron Bowman
 Richard & Patti Brasfield
 Paul & Armida Budd
 Adrienne Burke & Jeff Foster
 Natalie Burtson
 Paula Cleary & Paul Farrell
 Gordon Cliff
 Ann Jones Cole
 Craig & Pamela Moss
 Virginia & Jimmy Dean
 Aili DiBonaventura
 Adam & Cathy Dunsby
 Amy & Andy Dutter
 Easton Garden Club*
 Steve & Britt Ezzes*
 J. Thomas & Kathy Failla**
 Stuart & Donna Farber
 Jonathan Fraade & Rita Appel
 Jeff & Lori Galdenzi**
 Girl Scout Troop 50997
 Marguerite & John Golden
 Roy & Eleanor Gosse
 Mitchell & Judith Greenberg
 Thomas & Terri Greene
 Eva Grundy**
 Andrew Herbst
 James S. Hoch
 William Chudd & Gretchen Hoffmann
 Janet & Dick Hoyt*
 Christopher Huntley
 Donald Hyman
 Benjamin Iben
 Michael Johnston
 Bryan Judge
 Eva Kornreich
 Norman & Celeste LaCroix
 Gerry Lang
 James & Amy Leahy
 Carl & Natalie Leaman
 Scott LePage*
 John & Ellen Levinson
 Elizabeth & Andrew Lustbader
 Lyric Services, Inc
 Lauren Soloff & Wesley Malowitz
 Alison & Sean Martin
 Jacqueline & George Masumian
 James & Melissa McGrath
 Meghann McKale
 David & Elizabeth McKinnis
 Candace Meader
 Donna Merrill
 Seth & Danielle Meskin
 John Meyer
 MowGreen
 Jennie & Devin Murphy
 W. Stephen & Muffie Murray
 Matthew J. Nelson
 Carl & Cat Nohre
 Judith & Brad Oren
 Missy & Sam Palmisano
 Bernadette Park
 Diane Parrish
 Len & Cary Peterson
 Sharon Plante*
 Justin & Kristen Plock**
 Ken Rath
 Christal Rodenhiser & Yogesh Sadarangani
 David Rubinstein
 Kevin & Pamela Rugg
 G. William & Patricia M. Schwert
 Steve & Erica Scioscia
 Christopher Scully
 Cliff Sirlin
 Blythe & Zandy Smith
 Linda & Eric Speer
 Eric & Monika Stokes
 Robert S. Strauss
 Robert & Anne Svensk
 Elizabeth & Jonathan Swallen
 Tomoko Tagaya
 David & Joyce Thompson
 Nancy Park Turner
 Chris Vatis
 Linda Vaughan
 Jeffrey & Diane Warren
 Ivan Watson

*Bruce LePage Conservation Fund **Green Corridor Capital Campaign ***Building Bridges/Vision 2030

Lawrence & Mary-Lou Weisman
Weston Boy Scout Troop 788
Michael Wilens & Carolyn Longacre
Craig & Stephanie Willis
Douglas & Helmi Zarookian
Susan Zaveruha
William & Amy Zima

Naturalists \$250-\$499

Jeanne Achille
Sarah Adair
Paula & Mark Argosh
Andrew Aspen
Bruce Audino
Delbert Auray
Lou & Lisa Bacchicocchi
Joyce & Ken Backman
Marjorie Golden & Russell Baris
James Barlow
Nancy Barrer & Larry Gall
Barbara Belnap
Jim & Mary Jane Berrien
Gail Berritt
Joel Black
Matthew Bovino
Robert & Jennifer Bowman
David & Jill Brant
Maggie Burchill
Lynne Burgess
Carol Cate
Ann Cathcart
Felix Charney
Jenny Chieda
Lawrence Cobrin
Jeff Cochran & Miriam Wugmeister
Jann Colabella
Andrew & Rely Coleman
Christopher Delaney
Peter Diefenbach
Jeremy Dreyfuss
Mike Dylag & Tricia Owens
Fairfield Garden Club
Margaret Farley
Doug Fincher
Holly & Carl Franquet
Ed & Lisa Friedland
Michael Friedman & Haley Lieberman
Peter Galant
Dr. Johanna Garvey
Edward Gerber
Linda A. Giers
Sal & Marie Gilbertie
Jerry Goodwin
Donna Granfors
Howard & Joyce Greene
Greens Farms Garden Club

Growing Solutions
Landscaping & Design
Andrus & Susan Hand
Michael & Melaina Hansson
Michael Hehenberger
David Hertan & Claire Hurley
Jonathan & Beth Hochhauser
Matthew Hollis
Bob Hurwitz
Sandy Fontaine Hyde
Renea & Daniel Jacobs
Michael Jehle
Thomas & Carol Johnson**
Nancy Kail
Barbara Kellerman
Carol & Val Kratzman
Daniel Krook
Graham & Shelia Lamb
Ronald Landis
Daniel Leavy
JF Legault
Mark LePage*
Matthias Linder
Daniel Loft
George Loucas
Jennifer Loya
Ted Luchsinger
Ellen Lynch
Lucia & James Marion
Crozer Martin
Janice & Robert Martinez
Mary Lou McGuire
Catherine Mennenga
Robert Meyer
Analiese Mione
Craig Moss
John Moxley & Jennifer Drew Moxley
Jeremy & Kristin Nierman
David & Maria Nulf
Kevin & Margaret O'Halloran
Victor Olmedo
Heidi Palmer & Robert Kruger
Kathryn & Richard Pershan
Jay Petrow & Nancy Clarke
Tyler Philpott
Danya Pincavage
Dominic & Victoria Ponce de Leon
Elizabeth Poyet
Evelyn & David Quigley
Marie Radcliff
Jan Redfern
Jessica Robinson-Papp
Andrew Rosenberg
Diane Rowland
Sharon Sanford
Sasqua Garden Club
Ann Sawyer
The Schettino Family

Robert Schoen
Kurt & Caroline Schreder
Charles Shaeffer
Lisa Shanahan
Nancy Shor
Margery S. Silk
Kelly Skarupa*
David & Marcie Slepian
Caroline Spak
Chris & Sara Spaulding
Cindy & Joe Sproviero
Dale & Mike Steinharter
Robert M. Stilson
Stephen Strong
Theodore & Patricia Stypinski
Vasanth Subramanian
Carol Swenson
Faith Taylor & Theodore Sullivan
Julie Tessler
Andrea Turner
Claire & Richard Van de Bergh
Donald Wainright
Danielle Walker
John Warburg
Jonathan Webster
Kate & Seymour Weingarten
Seth & Gayle Weinstein
Ralph & Mary Welsch-Lehmann
Richard Werner
Landon & Alicia Westerlund
Doug & Deidre Williams
Steve Wisdom
Amy Wistreich
Frederic Withington
Wofsey, Rosen, Kweskin & Kuriansky, LLP
Pete & Janet Wolgast
Patricia M. Woolsey
Melanie Wyler
Nathaniel & Mary Yordon
Miriam Zalcman & David Tobey

Family \$100-\$249

Scott Abram
Louise Albrecht
Andy Alcosser
Kristin & Matthew Aldrich
Robert Aldrich & Sarah Kaplan
Catherine & Victor Alfandre
Molly Alger
Susan Alintoff
Jim Allison
Pam & David Allon
Jeff & Jeanne Altman
Andrew & Michele Ames
Abigail Anderson

Judith Anderson
Michael & Susie Anderson
Jerry Saunders & Elaine Appellof
Michael Archambeau
Stephen Aulenbach
Dea & Thomas Auray
Vinny & Diane Auriemma
Ruth & Robert Ayles
Jennifer Bagnato
Russ & Vicki Bailas
David Baker
Steven Baker
Gregory & Susan Bambach
Violette & Philip Barasch
Gina Barricelli
William Bartosik
Ruth Baruth
Wendy & Richard Baskin
David Bayne
Debbie L. Benner
Michelle Cole & Andrew Bickford
Raymond & Nikki Bievenour
Jon Bigelow
Douglas & Pat Bilinski
Carolyn Hill-Bjerke
Woody Bliss
Charlene Mars Blount
Caryn Bocchino
Jay Bockhaus
Patricia Bogie
Margaret Bonner
Carolyn Book
Elizabeth Boyce
Serge Boyce
Bob Cooper & Jessica Bram
Thomas & Jae Braun
Christopher Brogan
Jim Bromer
Debra Browne
Eileen Buckley
Monica & Gary Buesser
Ksenia Bukina
Jeffery Burdeshaw
Anne & Paul Burmeister
Ward Burns
Sam Buttrick
Sally Cadoux
Aliko Caloyeras
Celia Campbell-Mohn
John Cannon
Thomas & Patricia Carey
Lynn Carlson
Eileen & Albert Caronia
Marian Carpenter
Michael & Lisa Carpenter
Roz & Joe Carpentieri
Joyce & Richard Carroll
Scott & Carlie Centrella

Kyle Champney
Julianna Chandler
Barbara Charmoy
Stephen Chase
Jeffrey Chasnow
Diana Chiodi
Terry Cho
Lori Church
Walter & Jeanette Ciciora
Alyson & Frank Cleary
John Clevenger
Stephanie Coakley
Ari Cohen
Mary Colacurcio
Carrie Colangelo
Thomas & Doreen Collins
Robert Colvin
Susan Corl-Carroll
Bernard Yemc & Barbara Cottingham
Ive Covaci
Lauren & Scott Craighead
Karen Crape
Christopher Crosby
Rachel & Joseph Cross
Emmet Curry
Martha Curtis
Beverlee Dacey
Vincent & Nicky D'Agostino
Deniz Dalay
Wendy Daly
William & Laura Damm
Danosky & Associates
Jessica Dassori
JoAnn Davidson
Emily Davis
Adam de Havenon
Paul & Roberta Delano
Michela Depanflis
Susan Devlin
Jeffrey DeWitt
Nancy Diamond
David & Grace Didato
Janina & Casimir Dobkowski
John Duer
Mrs. Henry B. Dupont III
Jacqueline Duvoisin
Susan C. Eastman
Ken Edgar
Bonnie Edwards
Stephen Edwards
Todd Edwards
John & Amanda Elliott
Michael Tomashefsky & Alice Ely
William Emerson
Denille English
Joel & Arline Epstein
Diana Erdmann
Silvia Erskine

Sarah Evans	Eunice Hanson	Louise & Kirby Klump	Regina & John Mello	Ken Zita & Michelle Quigley
Fairfield County Bank	TJ Hanson	Kathryn Knapp	Patricia Mennitt	Oliver Radwan
Marcia & Stephen Falk	Joel Hausman	Marc Knispel	Debbie & Evan Merberg	John Ragland
Princie & Bob Falkenhagen	Dayna & Arin Hayden	David Koch	Phillip & Janet Merriss	Vonda Raisides
Lee Ann & John Fallet	Robert Haydu*	Midge Krisak	Carolyn Meyer	Beth & Jay Rand
Justine & Cris Fellows	Harriet Heineman	John T. Kristy	MaryAnn Meyer	Mary Randolph & Paul Lindoerfer
Roe & Jay Fellows	Warren & Carole Heller	Jim Kucharczyk	Shaina Meyer	Thomas Raskauskas
Mary Clay Fields & Louise Washer	Todd Henrich	Peter & Carleen Kunkel	Andy Meyers	Ray & Carolyn Rauth
Emily Fisher	Cynthia Herlihy	Olabisi Kuye	Laurajean & David Meyers	Katherine Reed
Ken Fishman	Anna Herling	Richard Kwasny	Lois Miller	Douglas M. Reid
Ed & Tenya Fitz III	Laurence Herman	Bill Lacy	William M. Miller	Ellen Resnick
Anne Fitz	David & Rosanne Hermenze	Warren & Lisa Lagerloef	Salvatore Mollica	Martin Resnick
Kerry Fitzgerald	Paula & Robert Herzlinger	Derek Lakin	Amanda Montgomery	Meredith & Alex Ressi
Linda Fitzgerald	John Herzog	Karen Lange & Stuart Gagnon	Nancy Moon & Steve Gordon	Beth Rhame**
Martina & Michael Flammer	Brinker Higgins	Andrew & Lynne Langlois	Thomas Morris	Leslie & Harvey Riback
Harriet Flehinger	Elizabeth Higgins	Dennis Larkin	William Morse	Thomas & Joan Richardson
Eileen Lavigne Flug	Thomas & Janet Himmelright	Edward Laska	James Mullen	Pam Richter-Lenon
Ellen Flynn	Robert & Joyce Hobbie	Monika Lazaro	Ann Munnely	Diana Ringelheim
John & Cara Forgione	Maria Rickert Hong	Tyler Lee	Amanda Murphy	Doug & Dana Robinson
Wayne F. Forte	Jonathan Alexander & Julia Horowitz	Nicholas Leeper	Ed & Bonnie Murphy	Scott Robinson
Cornelia Fortier	Lyndsay Howard	Sandy & Larry Lefkowitz	Kimberly & Morgan Murray	Edwin & Maria Rodbro
John & Claire Foster	George Cheng Hsu	Bob Lessler & Debbie Pearlman	Miriam Naggar	Pamela Roman
Jack & Ann Franzen	Judy Hu	Susan Levine	Dale & Peter Najarian	Peter Roman
Mark & Alexandra Friedman*	Rebekah Stratton Huber	Donna & Serge Lewi	Jeremy Nance	Sandra Rosenberg
Pascal Fuchs	Harvey Hudes	Judi & Larry Lich	NATIVE	Jeffrey Rosenkranz
Amy Gadow	Nancy Moore & Donald Hulnick	Zorba Lieberman	Nathaniel Nevas	Robin Rosic
Leandro S. Galban III	Nancy Moore & Donald Hulnick	John & Bethany Lilliquist*	Jennifer Nicasio	Rebecca Ross
Jennifer & Paul Gasbarro	James & Claudia Humphrey	David Lindland	Jenifer Niels	Dana Rossi
Nancy & Bill Gault	Lynn Humphrey	Wendy Lindquist	Mark Nigrosh	Paul Rossi
Leslie Geary	Kara & Richard Hunter	Eric Linnetz	Amer Nimr	Esther Rothenberger
Karin Giannitti	Barbara & Edward Hutchins Jr.	Tommy Lionelli	Gloria & Peter Nussbaum	Dara Rothschild
Brenda Giegerich	Saul & Elissa Hyatt	John Lippoth	Gregory Obrien	Amy Roulston
Valerie Gillies	Roneil & Julianne Icatar	Alice Locarno	Jessica Oddo	Rima Roy
Colleen Gillon	Eric Jacobs	Stephanie Lofaro-Gerlach	Ross Ogden Sr.	Don & Darlene Rubenstein
Jennifer Ginsberg	Eric Jacobs	David Logie	Alessandra Okay	Ron Rudolph
Bruce Glaser	Karen Jacobs	Jennifer Longmire	Elaine O'Keefe	Bill & Fleur Rueckert
Susan Glendinning	Jalna E. Jaeger	Allison Lubchansky	Alexandra & Peter Oldershaw	Jill & Scott Rutsky
Adam Gold	Warren Jahn	Marc Luxemburg	Guy Orly	Barbara Sager
Peter Gold	Claude January	Kevin Mabley	Lynn Padell	Craig & Kelly Saltzgaber
Patrick Goldschmidt	Christopher SJ Jennings	David & Christine Macklem	Kristen & Matt Panichella	Daniel Satlow & Sara Nuland
David & Carolyn Goodman	Brenda Johnson	Charles MacMath	Gretchen & Michael Patterson	Terence Sauer
Stacey Goodwin	Ginny Johnson	Rose Malindretos	Joseph Patzelt	David Saussy
Joel Gordon	Virginia Johnson	Ed Mally	Ann Pawlick	Jonathan & Sarah Sawitsky
Philip Grabfield	Benjamin Joseloff	Samuel & Heike Martin	Glenn Payne	Elizabeth Scarborough
Katharine Graves	Merritt Juliano	Todd & Denise Martin	Robert Perless	Gail Schneider
Katheryn Gray	Louise & Tom Kaczmarek	Kelly Matmati	Jacque Marumoto & Larry Perlstein	Art & Jayne Schoeller
Stuart & Susan Green	Egilis Kaljo	Heather Maxson	Shanna Peronace	Paul Schwalen
Tina & Peter Green	Richard Kalt	Brian Mayer	Ed & Laurie Perrault	Jack & Sally Schwerdtle
David Greenapple	William Kambas	Ryann McCabe	Jay Perreault	Maria Sciaudone
Kenneth D. Greenwald	Carol Kane	Mary McCutcheon	Steve Perreault	Karen Wendell & Joseph Scordato
Sherry Greer	Daniel Katz	Mary McGee	Lillie & Joseph Pesce	Juliette Seaman
Colette Griffin	Dena Kedra	Peter McGinnis	Michael Piquette	Andrew & Cathryn Sebor
Sebastian Grimm*	Debbie Keeley	Joseph McGlynn	Linda Prestegaard & Brian Crane	Rita & Richard Seclow
Margaret Grosso	Sean & Deirdre Kelly	Dave McGrew	Chris Price	Eiko & Gary SeEVERS
Ann & Donald Gustavson	Bill Kenny	Michael McGrew	Timothy Prister	Eric & Leslie Seidman
Arnold Gustavson	Chris & Andrea Kerin	Chris McNamus	Joseph Puchalski & Jean Stetz Puchalski	Barry & Susan Seigerman
Thaddeus Habza	Wendy Kerner & David S. Rintoul	Tina McNulty	Jane Purcell	Bernie & Joanne Sezon
Heidi & Jeffrey Hammer	Tara Sanft Khan	Diane Melish & Alex McNab		Kim & Mark Shapiro
Noah Hammond	Lynn King	Michael Melkonian		

*Bruce LePage Conservation Fund **Green Corridor Capital Campaign ***Building Bridges/Vision 2030

Larry & Margarita Shapiro
Brian Sharlach
Adam Shaw
Jocelyn T. Shaw
Andrew Shepard
Kim Sherwood
Nicholas Shields
Anat Shiloach
Atsushi Shinomiya
Sonya Shrier
M. Bora & Cynthia Sila
Hildi & Richard Silbert
Drew Silverstein
Steven Skoler & Sandra Horback
Mark & Cindy Slane
Cathy Smith
David Smith
Mimi & Toby Smith
Robert Smith
Jon Sobel
Elizabeth & Peter Sosnow
Patti & Peary Spaght
Jessica Spector
Jody Stapleton
Stephen Steinbrecher
John F. Stepanowski
Loretta Jay & Arkadiy Stepanskiy
Anne Stephan
Sarah Stewart
Julian Stroud
Ramesh Subramanian & Christine Vetter
Karin & Jim Sugerman
Alison Sullivan
Allen Sullivan
Dawn Sullivan
Kelly Sullivan
Walter & Patricia Sullivan
Dana Taylor
Susan Teicher
Neil Teplica
Clark & Jennifer Thiemann
Charles Thomas
Kathleen & Alexander Thomson
Deborah & Rudolf Thunberg
Paula Toi
Trish & Jim Tommins
Julie Traum
Norman Trepner & Susan Thomsen
Paul Trotta
Teresa McManus & Brian Truskowski
John & Susan Tschirhart
Masako Uchiyama
Carl Urbania
Julia Uris
Peter & Karen Valenti

Mary Valentine-Terranova
Douglas & Catharine Van Tornhout
Peter Vanhagen
Dave Vann
Drew & Anna Vaporis
Barbara Vogel
Brian Voytek
Diane Vulcano
Ash Waechter
Amanda Walker
Betty & Tim Walker
David Walker
Kathleen Walsh
Frederick Walters
Dava Waltzman
Lynn Waltzman
Samuel Wang
Judith Waters & Tom Buttke
Ann & John Watkins
Amy Watson
Masha & Charlie Watson
Donald Watson
Audrey & Richard Webb
Beth Welch
Kathryn Weld
Richard Welter
Mitch Weseley
Weston Garden Club
Judson Wible
Mike & Roni Widmer
Augie Wilkinson
Cynthia A. Williams
Hilary Williams
Rhonda Williams
Carolyn Wilson
Mark Wratten
Carol Wright
Vicky & Al Zaleski
Andrea & Lisa Zana
Rich & Maggi Zeldes
Ken & Cathie Zimmerman
Dr. Jon & Lauren Zirn
Lawrence Zlatkin

Individuals \$50-\$99

Gail Abrams
James & Wendy Accomando
David & Becky Acselrod
Diane Akhbari
Jane Allen
Gerardo Ancalmo
Brooke Andrews
Tom & Jan Andrews
Eric & Kathleen Appellof
Taylor Armstrong
Jane W. Atkinson
Elizabeth Back
Sacha Bacro
Mary Bailey & Toby Welles

Michael W. Banten
Keith Barber
Lisa & Noam Bardin
Susan Barnet
Robertson Barrett
John Bauby
John & Adrienne Beckmann
Virginia Bentley
Karen & Alan Benway
Lisa & Paul Berger
Stephanie Bhonslay
Wendy Bitler
Bill Blaufuss
Kerri Blawie
Michael Blumenthal
Ken Boardman
Bottomline Technologies
Sandra & William Bouton
Donna Bozzuto
Krista Bradford
Matthew Brand
Kathryn Braun
Susan Breen
Lisa Bregman
Donna Broomall-Cain
Michael Brown
Debbie & Wiser Brown
Diane Brunelle
Robert & Evelyn Bruns
James & Lucy Buggy
Roberta & Thomas Cable*
Carmine & Karen Calabrese
Christian & Rachel Calememo
Carolyn Capshaw
Meaghan Carey
Shari Carey
Tara Carlson
Ronald & Gail Carroll
Claudia Carson
Thomas & Letitia Carter
Lynn Chalk
Joyce Charles
Timothy Paine Chaucer
Donna Chicha
Deirdre Childs
Kiersten Chou
William Christiaanse
Roberta & Robert Clark
David A. Cleveland
Jean & George Clift
Paul Coffey
Mark Cohen
Amy & Ross Colbert
Don Collins
Christine Cook
Mark Corcoran
Jeffrey Craig
Jeffrey Crean & Denise Farley
Mary Crean
Wendy Crowther

Jeffrey Culp
Julie Culver
Geoff Curley
Amy Curry
Nicolas Dacey
Thomas Dailey
Xue Davis
Mario Del Conte
Katharine DeLong
Rima Demarias
Victor & Roanna Demasi
Jennifer Dennison
Nanette DeWester
Mia Dillon
Geraldyn DiMango
Valerie DiPrato
Petra Dobbs
Nancy & Paul Doniger
Kim Doyle
Bill & Margaret Dragan
Nina Driscoll
Pamela & Alex Drought
Mark Drummond
Joan & Sid Dudash
Sue & Jeff Duetlgen
Marlyse & Jed Duguid
Charles Dunn
Martha Durham
Severn PC Duvall III
Martha & Don Ercole
William Ewert
Peter Eyes
John Fetridge
Sara & Rudy Feudo
John L. Field
Dorothy Fincher
Christa Ferrick Fitts
John Fitzpatrick
Jamie Forbes
Elizabeth Fort
Meg Francis
Richard Frazier
Margaret Freeman
Todd Fruhbeis
Veronica Fulling
Dearta & Justin Fusaro
Edward Fusco
Billie Gastic & Dominique Johnson
Verne & Jeanne Gay
Mrs. Elizabeth Gaynor
Patricia Gelineau
Daniel Gershburg
Orit Gilat-Arava
Mark Gilrain
Justin & Melissa Giorlando
Give Back Foundation
David Goldstein
Peter Gordon
Bill & Helen Gore

Kacey Gormley
Joel Z. Green
Phyllis Greene
Mark Greenfield
Tom Greenwald
Edward Greenwood
Rachel Grimmer
Camille Guthrie
BJ Hall
Madelon O. Hall
Marcia Hamelin
Robert Hamm
Harborview Road
Neighbors Group
James & Barbara Harman
Nancy Harris
Annie Hartigan
Thomas & Corina Havard
Aaron Havill
Christine Hawthorne
Elaine Hay
Ronna Haynes
Carl Hedlund
Drew Henderson
Lindy Hennessy
John & Suzanne Herlihy
Michael Hibbard & Lynn Wilson
Jade Hobson
Romilly Hodges
Jana Hogan
Rick Hogan
Jay Horn
Abigail Hornstein
Molli Hourihan
Dara Hubbard
Johanna Hughes
Marnye Hull
Brian Humby
Jack Ijams
Patricia Jensen
Tone Johansen
Kimby Johnson
Steven Johnson
Stephen Johnston
Ingeborg & Graham Jones
Irene Juthnas
Joanne Kant
Steven Kaplan
Edward & Irene Karazin
Nina Karol
Larry Kaufman
Werner & Janet Kaufmann
Elisabeth Keane
Carolyn Kearney
John & Rachel Keneally
Midge Kennedy
Karin King
Peter King
James Kiraly

Stephanie Klose
 Judith Koffsky
 Denise Kolbert
 Alex Koral
 Raymond Kozma
 Joseph Krahe
 Michele Kramer
 Martin & Roberta
 Krauthamer
 Peter Krieg
 Scott & Keeley Kriskey
 Beth Krueger
 Charles Landau & Kimberly
 Yonkers
 Linda Laske
 Nazlie Latefi
 Lynne Laukhuf
 Susan Lederfeind
 Kathy Leeds
 Becky LeGette
 Ben Lehberger
 Nikki Lehman
 Janet Lenhart
 Kevin & Teresa Lenhart
 John & Sylvia Leshane
 Gabrielle Levinson
 Joan Lindquist
 Charles Linley
 Natasha Lipcan
 Marty Lipset
 Kenneth Lisk
 Ted Lockwood
 Tom Loretan
 Helga Lose
 Jane & Joel Lubin
 Jean Luc & Claire Faucher
 Jay Ludy
 Lance Lundberg
 Dr. John & Phyllis Machledt
 Alexandra Mack
 Judy Malin
 Michael Mann
 Marilyn Marino
 Russell Mark
 Frank Marrone
 William Marshall
 Carola Marte
 Edwin Martin
 Mandy Maruyama
 Agnella Matic
 Brian May
 Stephen & Rachel Mazzarelli
 Brian Vahey & Cristin
 McCarthy Vahey
 Patrick McCarthy
 Steve & Mandy McDonnell
 Terrill & David McGoldrick
 Christina McGowan
 Erin McKenzie
 Tammara McMahan-Schriefer

Kathleen & Stephen
 McNamara
 Reto Meier
 Joe Mencil
 Marie Meserole
 Erica Messina
 Lisa Mezoff
 Sarah Middleleer
 Emily Mikesell
 Susanne Miller
 Kevin Milmore
 David Minchin
 Tim & Annie Mingle
 Laurie Mirra
 Michele O. Modugno
 Caroline Morgan
 Gian Andrea Morresi
 Christian Morrison
 Mardi Morrow
 Alicia Mozian
 John Munro
 Keelin Murphy
 Jim & Wendy Muschett
 Meredith Z. Naidorf
 Renee Neiger
 Glenn Newell
 Bruce Nichols
 John & Mary Ann Nichols
 Angela Nolan
 Eric & Maria Nordstrom
 Francis Norris-Oliva
 Annette & Cheryl Norton
 Nancy & Jeff Oberman
 Jerid O'Connell
 Benjamin Oko
 Thomas Oliver
 Coleen O'Shea & David
 Anderson
 Rachel & Craig Oshrin
 Shawn O'Sullivan
 Ellen Panzeca
 Mike Paris
 Jum & Zeenith Park
 David & Penney Parkes
 Michele Parnell
 Greg Pategas
 Morgan & Grant Patrick
 Marc Pearlin*
 Ron & Carole Percival
 Robbie & Mark Peyser
 Ben Pianka
 Katharine Piazza
 Wendy Pieper
 Susan Pike
 Doug Politi
 Jen Posner
 David Pressler
 Claude & Karen Prioret
 Lily Proom
 James Prosek

Debbie & Larry Rehr
 Bruce & Allison Reznik
 Nina Riccio
 Martha Rising
 Carol Ritter
 Mariya Rivera
 T. Douglas Rodda
 John Rogowski
 Peter Rosenbaum
 Nancy Rosett
 Debra Rosner
 Donald Roth
 Josh Rothman
 Huw Rothwell
 Hardy & Jennifer Royal
 Jennifer Rubin
 Phyllis Ruffer
 Mitchell Sakofs
 Janine & Neal Salvey
 Jonathan Saxon
 Bonnie Scarborough
 Alan Schanzer
 Bob Schondelmeier
 Steven & Amy Sheinberg
 Gail Sheriff
 Jane E. Sherman
 Cindy Shumate
 Harold Siegel
 Irving & Nancy Silverman
 Mike Simons
 Bruce Katz & Judy Sloan
 Matthew Smith
 Nat Smitobol
 Michele Snapper
 Stuart & Susan Snyder
 Irwin & Elizabeth Sollinger
 Beth & Alexander Solomon*
 Penny Solum
 Carol Sommerfield
 Michele Sorensen
 Deanna Spartachino
 Lyla Steenbergen
 Kent Steinnagel
 Melissa Stern
 William Stewart
 Jeffrey Stiller
 Liz Stokes
 Michael Strange
 Dr. Gerald Strassberger
 Alice Stratton
 Edward Strong
 Janet Stulting
 Rae Suba
 James Sullivan
 Katherine Sullivan
 Margaret & Alan Temple
 Nadeen Csakany Tichy &
 Andrew Tichy
 Susan & Evan Tilley
 Dena Tolkin

Margaret Tucker
 Solomon & Diane Turiel
 Alexandra & Michael Turner
 Priscilla & Ken Twombly
 Anthony Tylutki
 Dana & Peter Uhrynowski
 James Utter
 Ursula Van Arnam
 Jennifer Van Malderghem
 Florence Vannoni
 Anne Venio
 Sarah Verrelli
 Carla Vickowski
 Elizabeth Vienneau
 William Voldstad
 Rhonda Voos
 Jesse & Jill Vose
 Kathy Wakeley
 Robert & Donna Walker
 Bob Wall
 Michael D. Wallace
 Rodney & Judith Wasel
 David Wegweiser
 Drew Weisberg
 Barbara Welles
 Ellen & John Weyrauch
 Abbie Winter
 Joan Winter
 Dori Wollen
 James Wood
 Donna Wright
 Lorraine & Theodore Yakush
 Mikhail Yermeev
 Aaron Young
 Tom Young
 Robert Zannetti
 Vincent Zito

Friends \$1-\$49

Suzanne Allen
 Howard & Helene Andrews
 Carolyn Armeth
 Robert Auer
 Claire Baker
 Frances Baldwin
 Roberta Barbieri
 Patricia Barrington
 John Barry
 Eugene & Roberta Bauchner
 Michelle Benner
 Nathan Bird
 David Blocher
 Louis F. Bregy
 Mark & Julia Brennan
 Elisabeth H. Breslav*
 Karen Brewer
 Dawn Brown
 Paula Butturini
 Marybeth Carragher
 Julie Castle

Joseph Celentano
 Julie Chayot
 Karen Chisholm
 Helen Cho
 Sophie Collett
 Benjamin & Jessica Cooper
 M. Crookenden
 Thomas & Ilona Decerbo
 Sophia DelGaudio
 Chris Deming
 Dale Demner
 Adrienne Durkin
 David & Susan Earle
 Alexandra Eisenberg
 Diane Endo
 Elizabeth Falk
 Steve Flynn
 Jill Franke
 Dawn Fuller
 Wendy Giffords
 Fred Gladis
 Susan Goodell
 Maureen Graney & David
 Green
 C. Greene
 Cheryl Groesbeck
 Merideth Haas
 Kathleen Harpster
 Samantha Heilweil
 Dolores Hennessy
 Beth Herrick
 Sue Hessel
 John & Cheryl Hewitt
 Terrance Holbrook
 Anna Holland
 Laurie Holst
 Andrea Hopkins
 Rick Hutchinson
 Sarah & Derek Hutchison
 Alyssa Israel
 Andrea Jacobson
 Anka Jones
 Pamela Jones
 Jennifer Just
 Evelyn Kaczmarek
 Melissa Kearns
 Jennifer Klein
 Jordan Klem
 Rick Krollman
 Mary Ann Kulla
 Dennis Laccavole
 Laura Lamorte
 Gail Lane
 Jean Laverdure
 Tammis Lazarus
 Timothy & Wendy Leahy
 Evelyn Lee
 Marca Leigh
 Kathryn Lemmon
 Brooke LePage*

*Bruce LePage Conservation Fund **Green Corridor Capital Campaign ***Building Bridges/Vision 2030

Joseph Liotta
Renata Lose
Charles & Kristina Lynch
Brenda Maggio
Melanie Majeski
Christine Marsh-Rijssenbeek
Lisa Matson
Carrie Mcevoy
Dennis McKeon
Will Meikle
Lisa Meserole
Andrew Middlebrook
Leslie & Guiliano Minasi*
Kristin Morrell
Mary Mullen
Everett Munro
Peter & Sandy Nathan
Anna Nees
Andrea & Kevin Neubauer
Humphrey & Carol Nichols
Cathleen O'Brien
Joseph Odoardi
Curtis Osborne
Mary & Todd Pajonas
Mike Pantano
Donna Parisi
Michael Pettiti
Michael Pianin
Nicholas Pizarro Jr.
Mary Ann Raph
Mike Rodell
Monique Rodrigue & Ned Elton
Daniel Rosenberg
Jodi Rosenfeld
Jacqueline & Howard Rosenstein
Allen Royce
Elaine Rust
Elizabeth Santa
Linnea Scheck
Madelein Schuster
Arthur Shim
Phyllis & Morton Silverberg
Beverly Skiles
Frances & John Slusarz
Joel Smith
Thomas Malin & Valerie Smith-Malin
Susan L. Spivack
Debra Squezzello
Matthew & Pamela Sulzicki
Ellie & Joeseph Susmeyer
Susan Tabachnick
Jeffrey & Ariane Tallman
Nathalie Taranto
Jennifer & Blake Titrud
Stephen E. Tower
Carissa & Dino Tozzi
Alfred & Ann Treidel

Alessandra Urist
Josh & Lisa Valinsky
Marsha Vetare
Wendy Vickrey
Maureen Williams
Kelley Wright
Nancy Zychek

In Memory Gifts

In memory of Alex Anastasio
Jann Colabella
In memory of Henry Angel
Vonda Raisides
In memory of
George & Barbara Bitler
Wendy Bitler
In memory of Nancy Braun
Kathryn Braun
In memory of Charlotte
Jeff & Jeanne Altman
In memory of Corinna
Richard Welter
In memory of
Barlow Cutler Wotton and
my dad, William Crowther
Wendy Crowther
In memory of
Margaret Kennedy Curry
Emmet Curry
In memory of Arthur Delano
Paul & Roberta Delano
In memory of Sadlier Dinger
Virginia Bentley
In memory of Jeanette Dipper
Ken Zita & Michelle
Quigley
In memory of Billie Drew
Michael D. Wallace
In memory of
Joseph & Natalie Epstein
Janet Epstein
In memory of Evelyn Frazier
Anne Venio
In memory of
Adam Wallace Glass
Elizabeth Poyet
In memory of
Ruth Glendinning
Susan Glendinning
In memory of Dr. Angela D. Hill
Carolyn Hill-Bjerke
In memory of Robert L. Hoch
James S. Hoch
In memory of
Raphael Hodgson
Leif Andersen
Frances Baldwin
Karen & Alan Benway
George Cheng Hsu
Silvia Erskine
Ken Fishman
Joyce Hergenhan

Benjamin Iben
Susan Ip
Marc Knispel
Michael Melkonian
Matthew J. Nelson
Kathryn & Richard Pershan
Laurence Pitteway
Timothy Prister
Atsushi Shinomiya
Tomoko Tagaya
Masako Uchiyama
Frederic Withington
In memory of Jeffrey O. Jones
Pamela Jones
In memory of
William J. Kupinse, Jr.
Kristin & Matthew Aldrich
Donna Bozzuto
David & Jill Brant
Paul & Armida Budd
Roberta & Thomas Cable
Alik Caloyeras
Shari Carey
Joyce & Richard Carroll
Aili DiBonaventura
Princie & Bob Falkenhagen
Carolyn Kearney
Chris & Andrea Kerin
Michele Kramer
Mitchell & Judith
Greenberg
Linda Laske
Susan Levine
Jacquie Littlejohn
Alice Locarno
Rose Malindretos
Dave McGrew
Michael McGrew
McHugh Family
Tim & Annie Mingle
Elaine O'Keefe
Joseph Patzelt
Cary Peterson
Pete Petron & Emily Kerns
Jodi Rosenfeld
Rima Roy
Linnea Scheck
Irving & Nancy Silverman
Caroline Spak
Susan L. Spivack
Debra Squezzello
Jeffrey Stillier
Lea & Dave Sylvestro
Alfred & Ann Treidel
Paul Trotta
Heather Williams & Colin
Walklet
Carol Wright
In memory of Bruce LePage
Easton Garden Club
Alan & Judy Goldbecker
Abby LePage
Brooke LePage

Mark LePage
Scott LePage
Marc Pearlman
Sharon Plante
Beth & Alexander Solomon
Masha & Charlie Watson
In memory of John Mackay
Angela Nolan
In memory of Julia Mally
Gerry Lang
In memory of
Matthew Marshall
Sarah Verrelli
In memory of Jeanne Matthew
Erica Messina
In memory of Pamela Meyer
Shaina Meyer
In memory of Ed O'Neill
Fran O'Neill
In memory of Elizabeth C. Pike
Susan Pike
In memory of Emily Rodenhiser
Christal Rodenhiser &
Yogesh Sadarangani
In memory of
Janusz & Janina Rushkevich
Eva Grundy
In memory of Michael I. Sovern
Patricia Sovern
In memory of George Sterling
Karen Jacobs
In memory of Storm, Rebel, &
Stealth
Tom & Emily Todoroff
In memory of David K. Storrs
David & Jill Brant
Landon T. Storrs
In memory of
Maureen A. Whiteman
Lawrence Zlatkin
In memory of James P. Woolsey
Patricia M. Woolsey

In Honor Gifts

In honor of Al Barney
Joe Mencil
In honor of Barricelli/Mola
Family
Gina Barricelli
In honor of Brant Family
Adam Gold
In honor of Bruce Brant
David & Jill Brant
In honor of David Braun
Doug Fincher
In honor of Michael Bud
Melissa Kearns
In honor of Joan Byrne
Lynne Burgess
In honor of Melissa Ceriala
William Morse

In honor of Luigi Chiodi
Diana Chiodi
In honor of Alice Cooney
Abbie Winter
In honor of Lincoln Craighead
Laura Craighead
In honor of Gowan Dacey
Beverlee Dacey
In honor of Dog Lovers
David Allen
In memory of Evie
Laurence Herman
In honor of Ellen & Paul
Greenberg
Jerome & Myra Greenberg
In honor of Carolyn Holleran
Dale & Peter Najarian
In honor of Jonah Hotchkiss
Nancy Lefkowitz
In honor of
Nancy Saipe & Bill Humphrey
James & Claudia Humphrey
In honor of Helen & Josephine
Mary Randolph &
Paul Lindoerfer
In honor of Kambas Family
William Kambas
In honor of Bill Kutik
Jeanne Achille
In honor of Mary Ellen Lemay
Ken Halaby
Pamela Roman
In honor of Wafaa Naggar
Miriam Naggar
In honor of The Newman
Family
Lyndsay Howard
In honor of Lissy Newman
Newman's Own
Foundation
In honor of David Nulf
Sophia DelGaudio
In honor of Matt Oliver
Jacquie Littlejohn
In honor of Bill Humphrey
& Nancy Saipe
Lynn Humphrey
In honor of
Those Who Adventure
Rocky Prozano
In honor of Kyaiera Tucker
Margaret Tucker
In honor of Maria Watson
Ivan Watson
In honor of Volunteers
Maintaining the Trails
Carl Hedlund

We apologize if we inadvertently misspelled or omitted your name, and hope that you will reach out to us so that we may correct our records.



Aspetuck Land Trust
P.O. Box 444
Westport, CT 06881
Established 1966

.....
aspetucklandtrust.org



Karalyn Lamb photo

The Great Horned Owl may be elusive, but you can often hear their distinctive call: hoo-h'HOO-hoo-hoo. At home in the Land Trust's woods and meadows, these owls are covered in extremely soft feathers that insulate them against the cold winter weather and help them fly very quietly in pursuit of prey. Their short, wide wings allow them to maneuver among the trees of the forest.

ALT members are helping to save land and promote biodiversity

Your tax-deductible donation is vital and appreciated and makes a big impact on our towns. You can use the enclosed envelope to send an additional gift supporting Aspetuck Land Trust or give it to a friend who values the outdoors. Remind them that ALT members get access to the Trout Brook Valley blueberry patch where they can pick blueberries all summer long. Thank you for insuring the

future of our world by conserving one open acre and one homeowner's yard at a time.

Connect @ f

Become a Fan of Aspetuck Land Trust on Facebook. It's a great way to stay up to date on our latest happenings. Sign up on our website to receive our e-newsletter.



Printed using recycled paper stock